



VIOLA CONCEPT
DÉVELOPPEMENT DE PROJETS IMMOBILIERS

*Bâtir son rêve
à la hauteur d'une époque ...*

- ✓ Votre maison neuve au meilleur prix
- ✓ Terrains de qualité et de grande superficie
- ✓ A un jet de pierre de Bruxelles
- ✓ Architecture design
- ✓ Caves et grands garages pour toutes les maisons



**MAISON BASSE
CONSOMMATION**



PRIX TERRAIN
+
MAISON
EN GROS
OEUVRE FERME
A partir de
155 000*
*HORS FRAIS

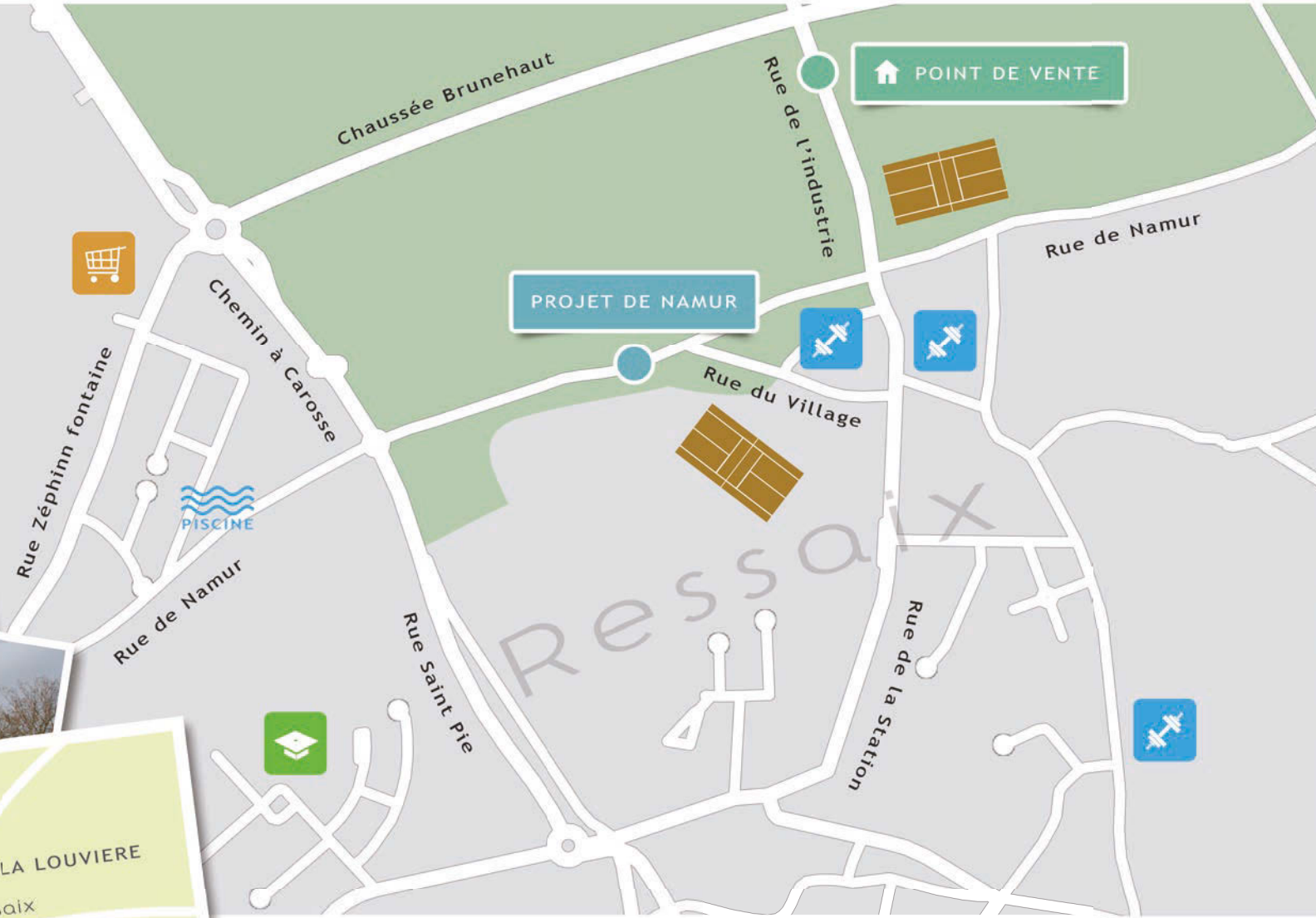
PROJET DE NAMUR

Rue de Namur - BINCHE (Ressaix)

20 MAISONS UNIFAMILIALES BASSE ENERGIE



-  Super-Marchés
-  Ecoles
-  Salle de Sports



🏠 Bureau de vente **IMMOBILIÈRE GEBBIA** - 33, Rue de l'industrie - 7134 RESSAIX
plus d'informations via le +32 (0)498 561 440

Qualité
100%
Assurée

PROJET DE NAMUR

Une maison offrant tout le charme, le confort de vie et la qualité des habitations de notre époque dans une situation privilégiée à deux pas de la capitale de l'Europe ...

Un emplacement unique ■

A quelques minutes à pied du centre de Binche ■

→ Ville mondialement reconnue pour son célèbre folklore et son patrimoine architectural !

A proximité des grands axes autoroutiers ■

Niveau de confort de vie élevé ■

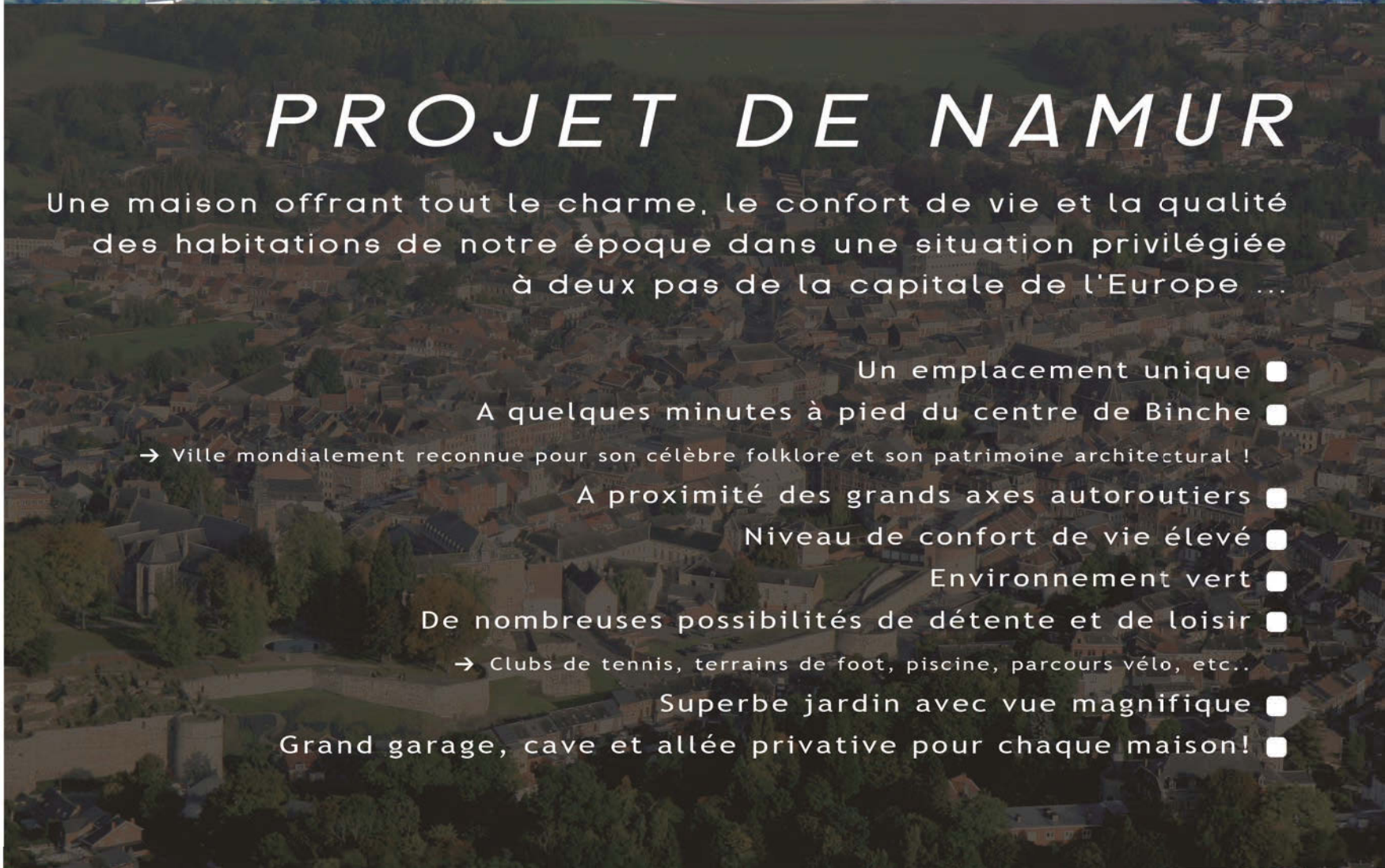
Environnement vert ■

De nombreuses possibilités de détente et de loisir ■

→ Clubs de tennis, terrains de foot, piscine, parcours vélo, etc..

Superbe jardin avec vue magnifique ■

Grand garage, cave et allée privative pour chaque maison! ■



Violaconcept a choisit de distinguer les maisons du projet DENAMUR en 5 modèles.

Ses modèles s'inspirent des récentes tendances architecturales qui s'harmonisent avec la nature dans un concept de développement durable.

Parfaites pour la vie familiale, ces charmantes résidences de style contemporaines offrent énormément d'importance à l'espace pour un milieu de vie sain et très ergonomique.



LOT	TYPE	SURFACE	MODELE	SUPERFICIE
1	3 FAÇADES	234,96 M ²	ELIT	13A 22ca
2	3 FAÇADES	234,96 M ²	ELIT	11A 47ca
3	3 FAÇADES	229,6 M ²	INGENTI	11A 17ca
4	2 FAÇADES	210,68 M ²	DOMUS	8A 64ca
5	3 FAÇADES	288,63 M ²	LOUNGE ELIT	9A 95ca
6	3 FAÇADES	283,27 M ²	LOUNGE ELIT	9A 35ca
7	2 FAÇADES	210,68 M ²	DOMUS	7A 22ca
8	3 FAÇADES	229,6 M ²	INGENTI	11A 40ca
9	3 FAÇADES	234,96 M ²	ELIT	9A 95ca
10	2 FAÇADES	237,57 M ²	DOMUS	7A 45ca
11	2 FAÇADES	237,57 M ²	DOMUS	7A 35ca
12	3 FAÇADES	234,96 M ²	ELIT	11A 27ca
13	3 FAÇADES	229,6 M ²	INGENTI ★	8A 24ca
14	2 FAÇADES	215,47 M ²	URBANA ★	3A 75ca
15	2 FAÇADES	223,83 M ²	DOMUS ★	3A 87ca
16	2 FAÇADES	223,83 M ²	DOMUS ★	3A 85ca
17	2 FAÇADES	215,473 M ²	URBANA ★	3A 71ca
18	3 FAÇADES	229,6 M ²	INGENTI ★	5A 45ca
19	3 FAÇADES	234,96 M ²	ELIT ★	6A 18ca
20	3 FAÇADES	234,96 M ²	ELIT ★	6A 30ca

★ POSSIBILITE D'ACCES PRIVATIF A L'ARRIERE DU TERRAIN

URBANA

Maison contemporaine avec une excellente organisation de l'espace (façade arrière rehaussée) et un volume de vie agréable.

DOMUS

Beau séjour ouvert et architecture design (façade stylée avec lucarne en dôme), cette maison répondra amplement à vos attentes.

INGENTI

Simplement ingénieuse, cette maison charmera votre famille par son élégant séjour ainsi que son passage latéral aisé et son très vaste jardin.

ELIT

Avec son garage deux voitures, son volume de vie supérieur et son espace jardin/passage latéral considérable, cette maison satisfera très largement vos besoins et ceux de votre famille.

Le niveau d'aisance et de confort de ce modèle fait de cette propriété une gamme supérieure.

LOUNGE ELIT

LOUNGE ELIT est un modèle unique dans ce projet.

Ce concept en doubles volumes (plus de 10m de façade), offre de l'espace supplémentaire en répondant aux exigences de chacun avec une architecture attrayante, idéale pour une profession libérale ou une grande famille !!

La distinction est de mise dans ce modèle...



*info@
projetdenamur.be*

Les images en 3D et les surfaces indiquées sont purement informatives et non contractuelles



VISITEZ NOTRE MAISON TEMOIN SUR RENDEZ-VOUS*



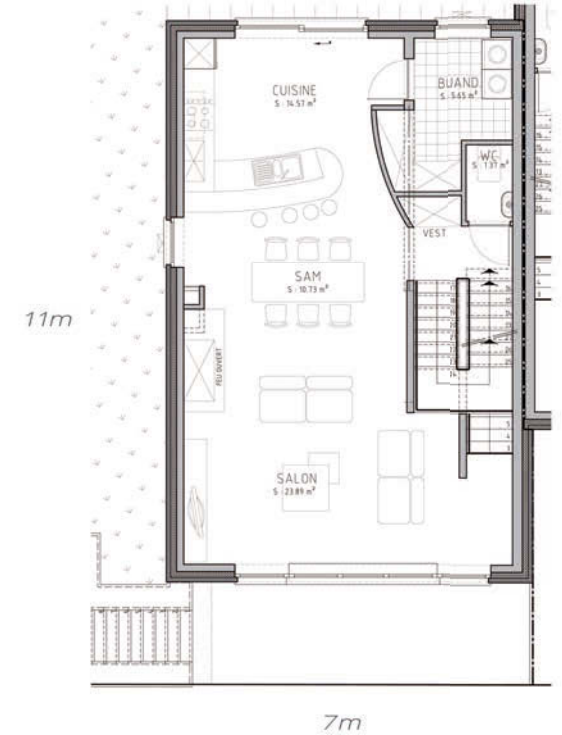
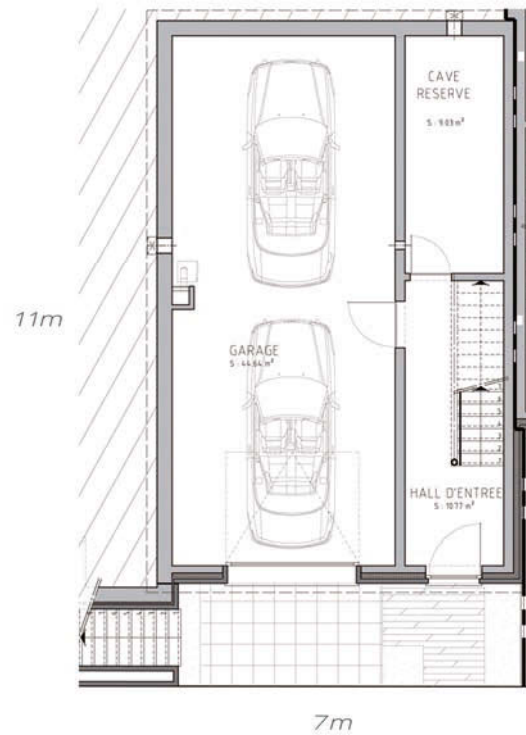
VIOLACONCEPT

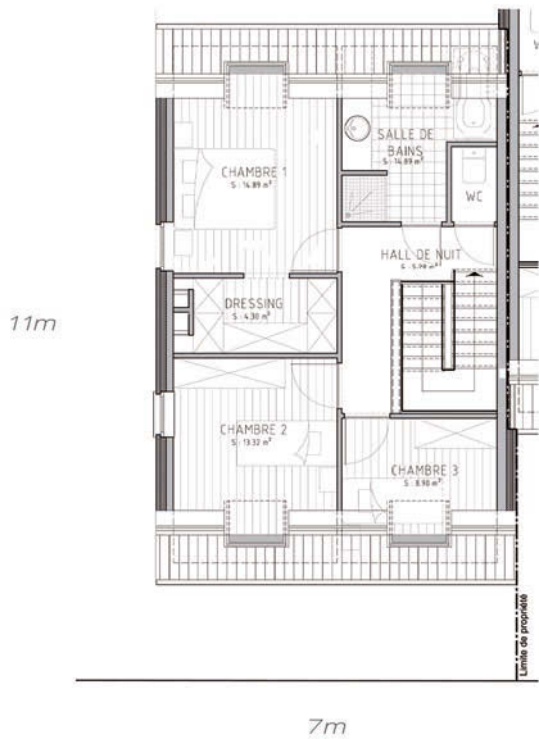
Une maison neuve à votre portée

Les atouts du projet de Namur :

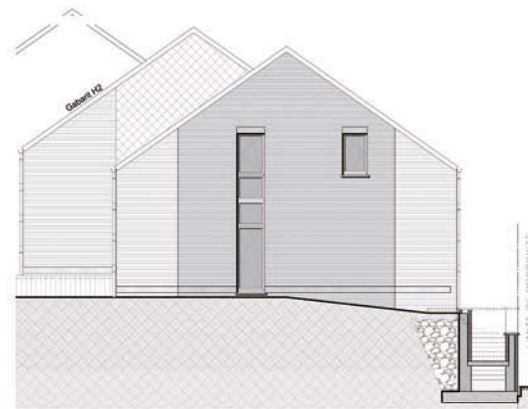
- Maisons spacieuses de plus de 200 m²
- Economie D'énergie
- Cahiers des charges bien étudiés
- Très bon rapport qualité prix
- Habitations lumineuses et très aérées
- Sélection terrains de qualité

*Voir au dos

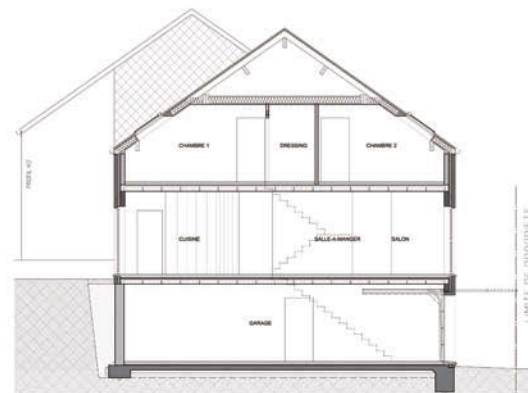




COMBLES



FACADE LATÉRALE GAUCHE



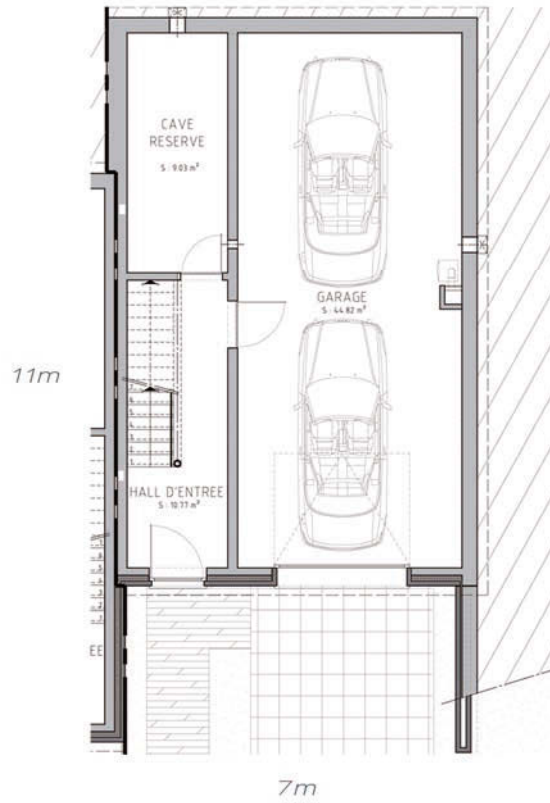
COUPE



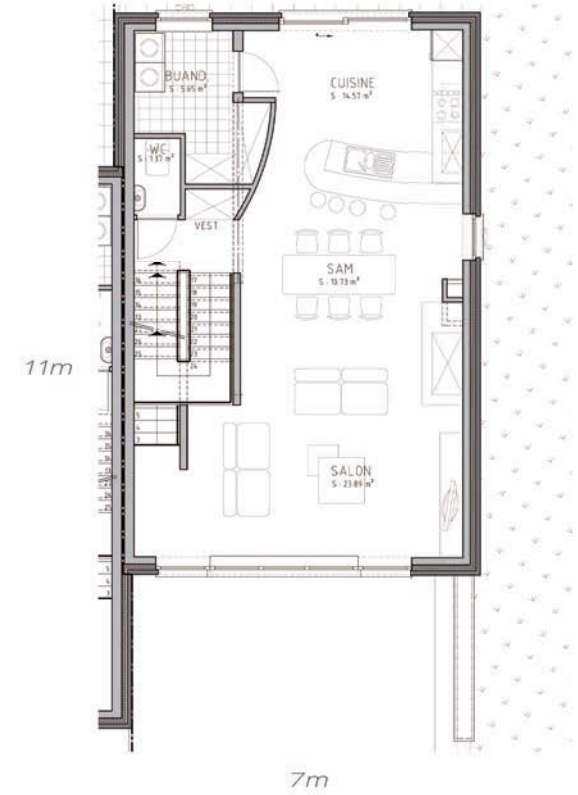
FACADE AVANT



FACADE ARRIÈRE



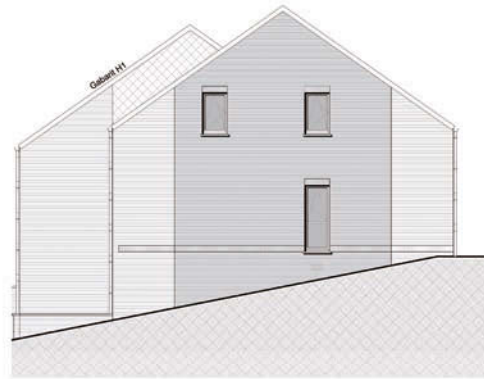
REZ-DE-CHAUSSEE



ETAGE



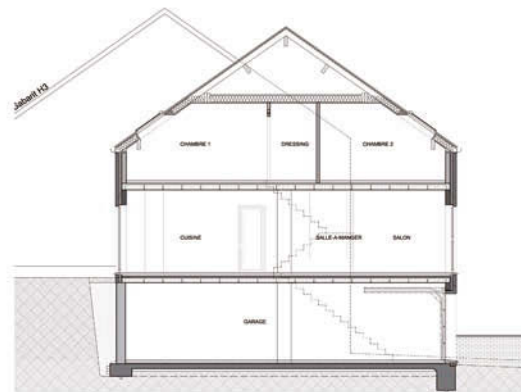
COMBLES



FACADE LATÉRALE DROITE



FACADE AVANT



COUPE

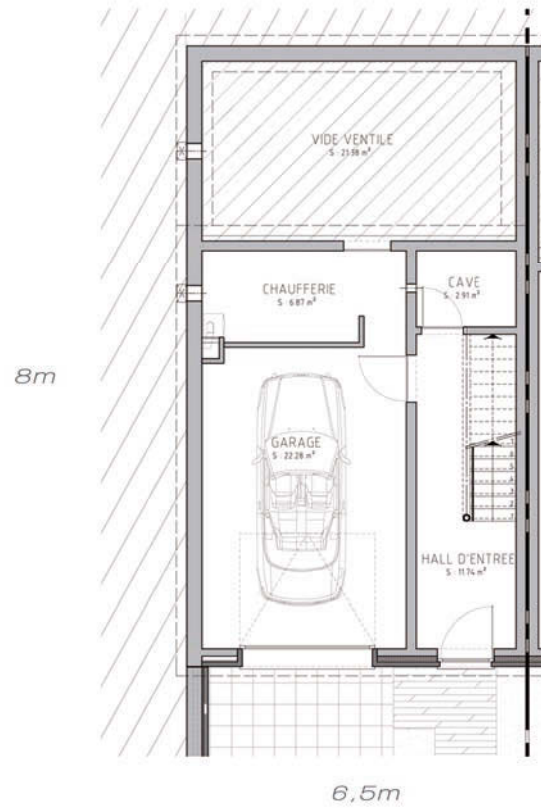


FACADE ARRIÈRE

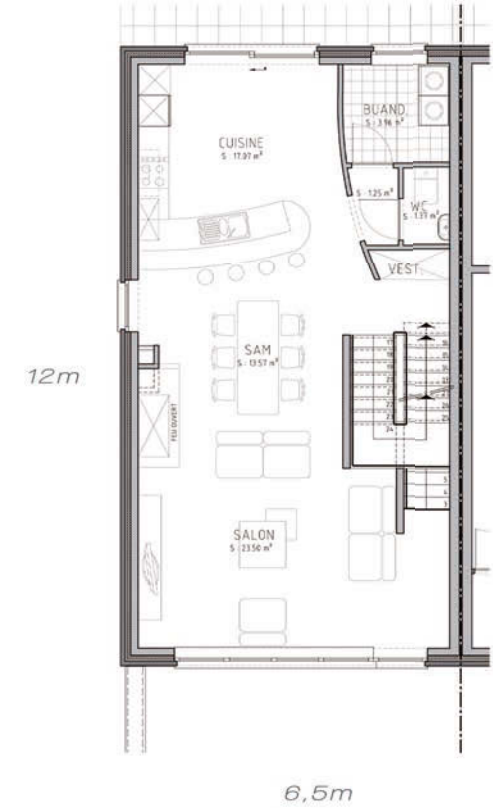
INGENTI



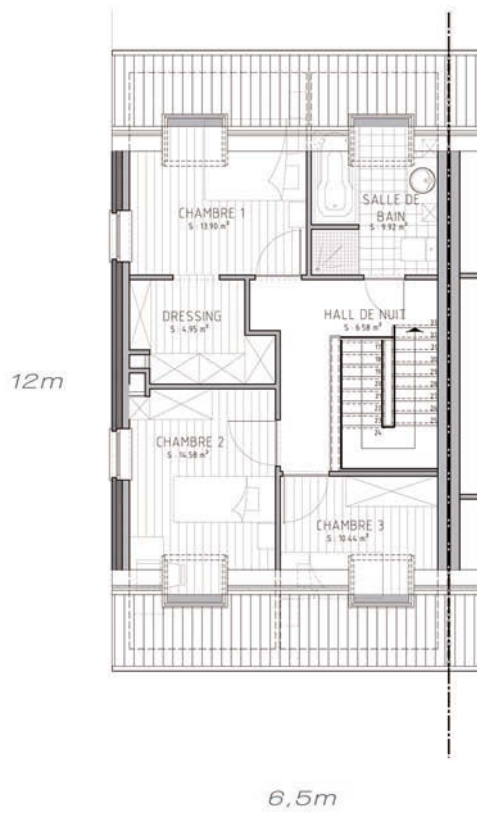
SITUATION



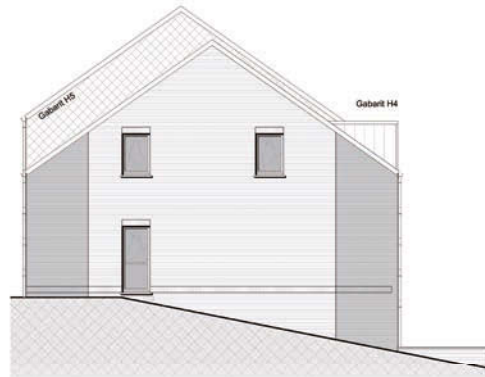
REZ-DE-CHAUSSEE



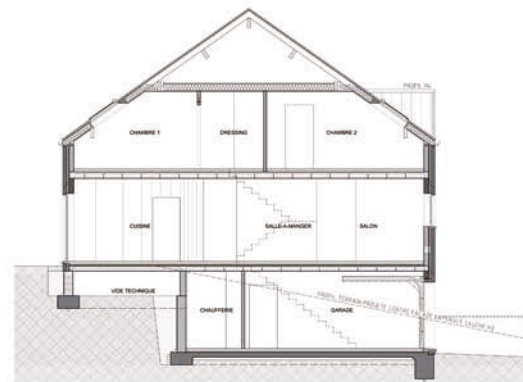
ETAGE



COMBLES



FACADE LATÉRALE GAUCHE



COUPE

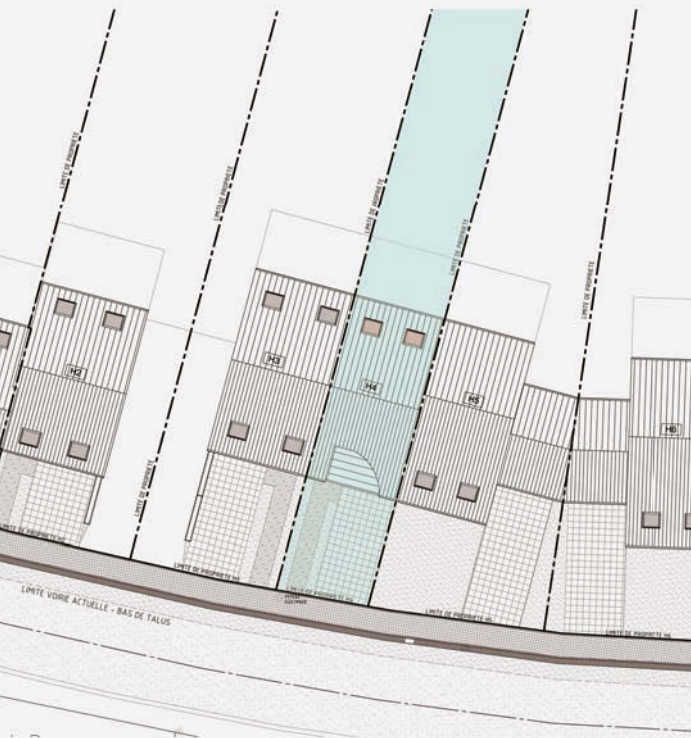


FACADE AVANT

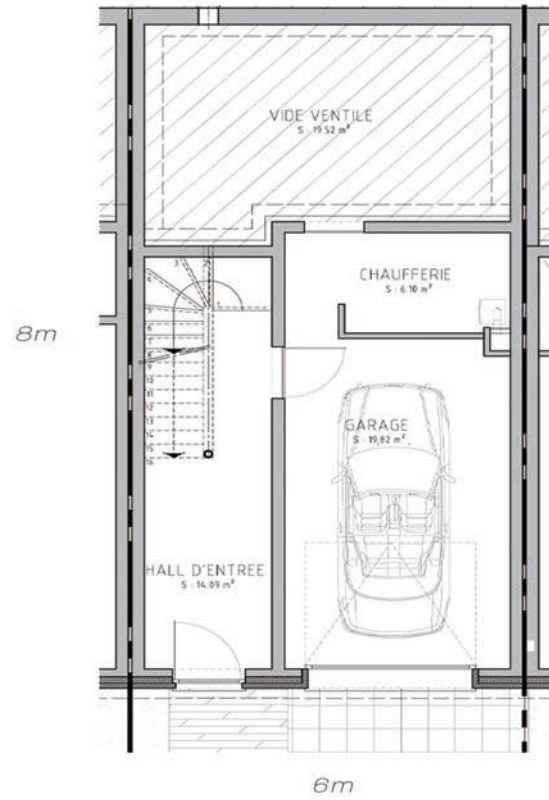


FACADE ARRIÈRE

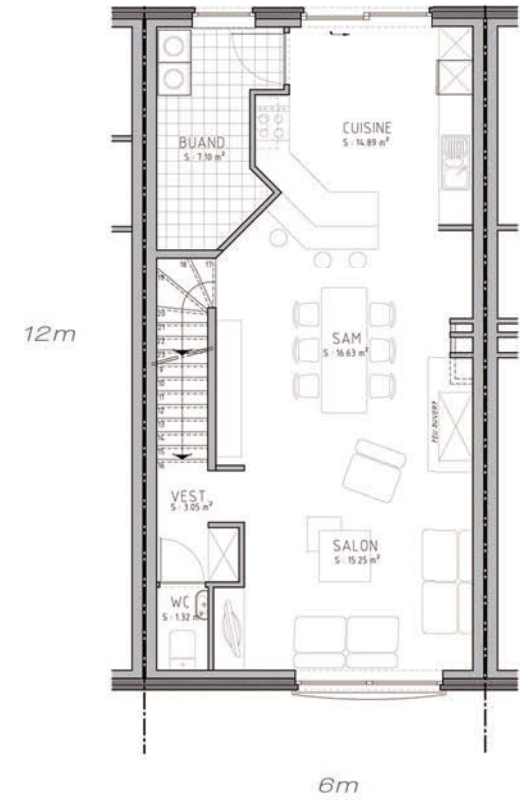
DOMUS



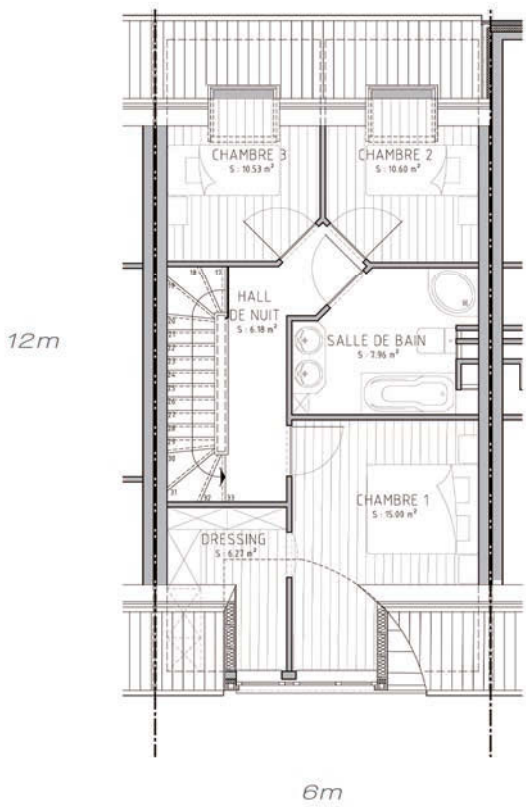
SITUATION



REZ-DE-CHAUSSEE



ETAGE



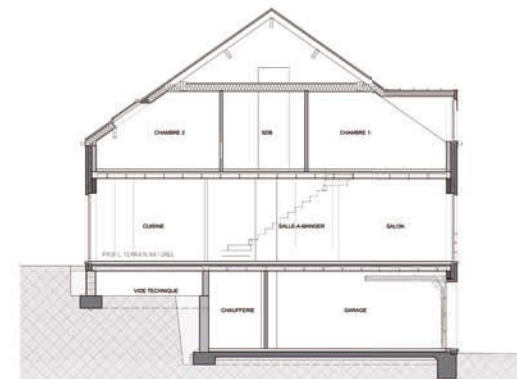
COMBLES



FACADE AVANT



FACADE ARRIERE

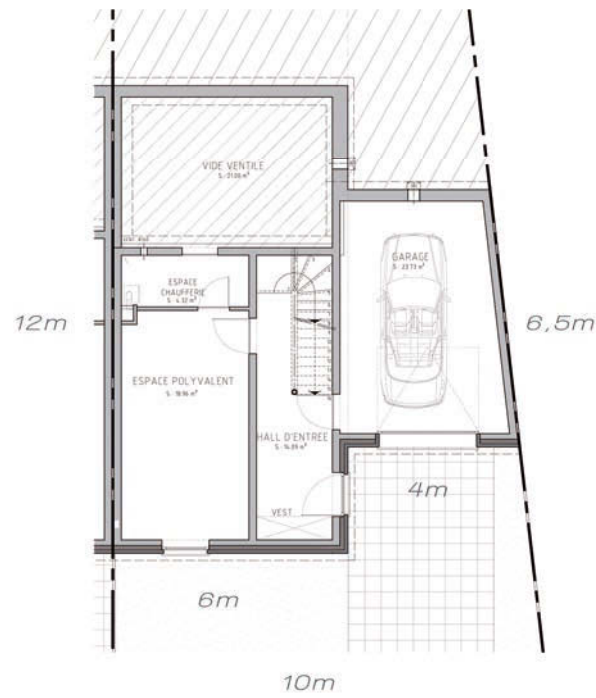


COUPE

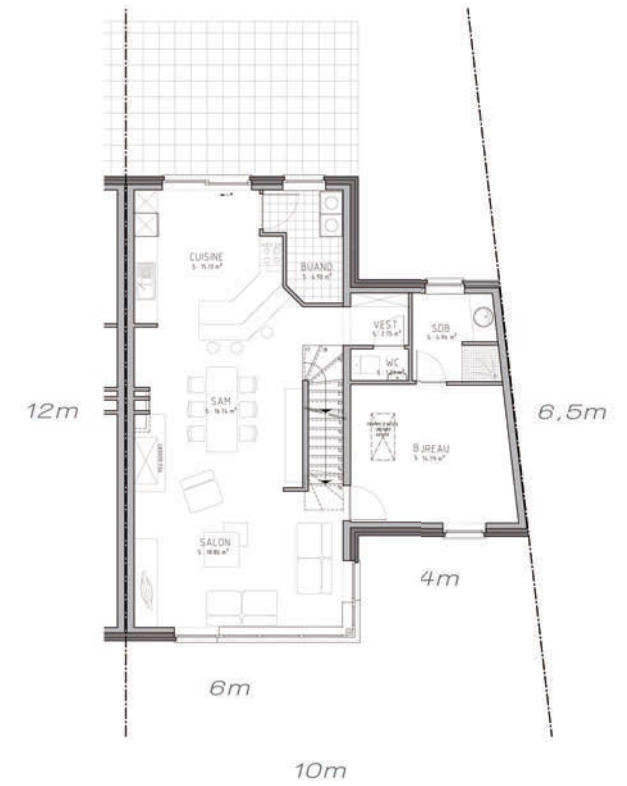
LOUNGE ELIT



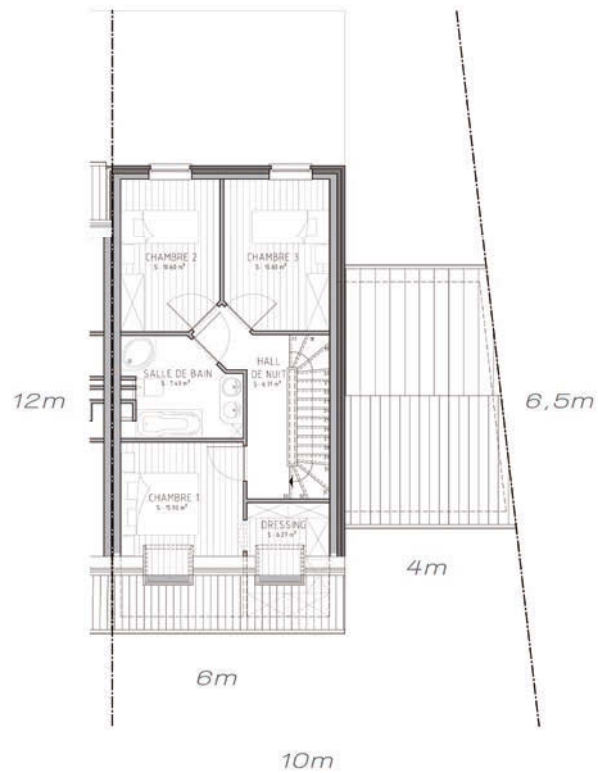
SITUATION



REZ-DE-CHAUSSEE



ETAGE



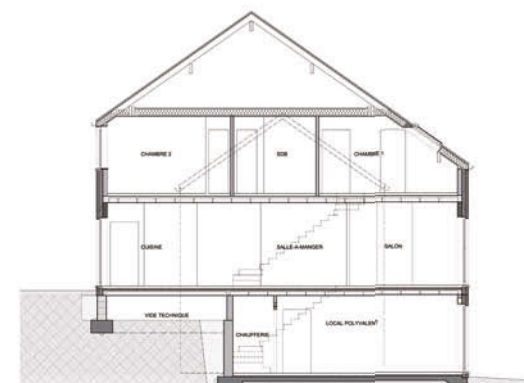
COMBLES



FACADE AVANT



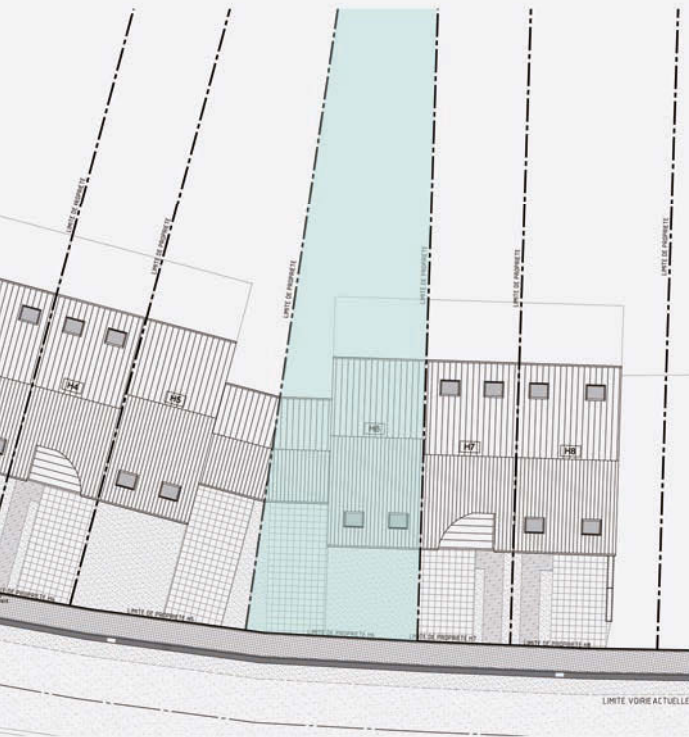
FACADE ARRIERE



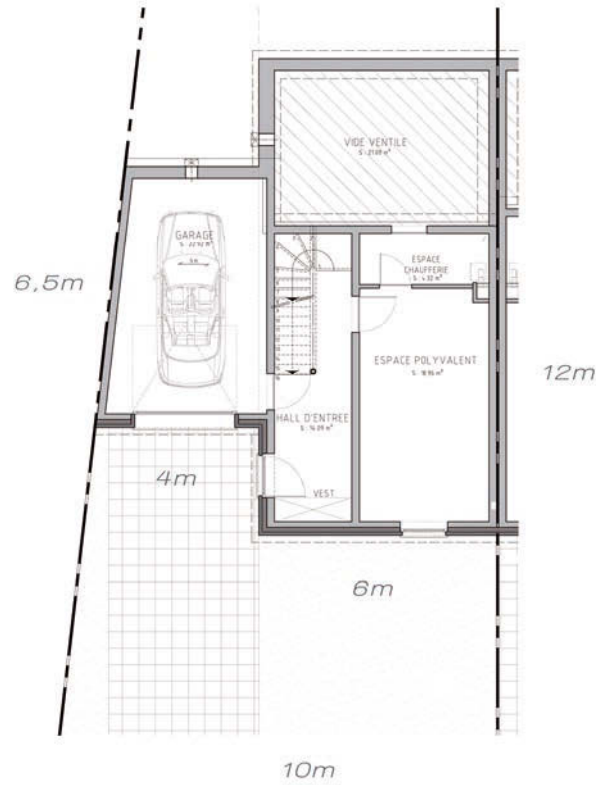
COUPE



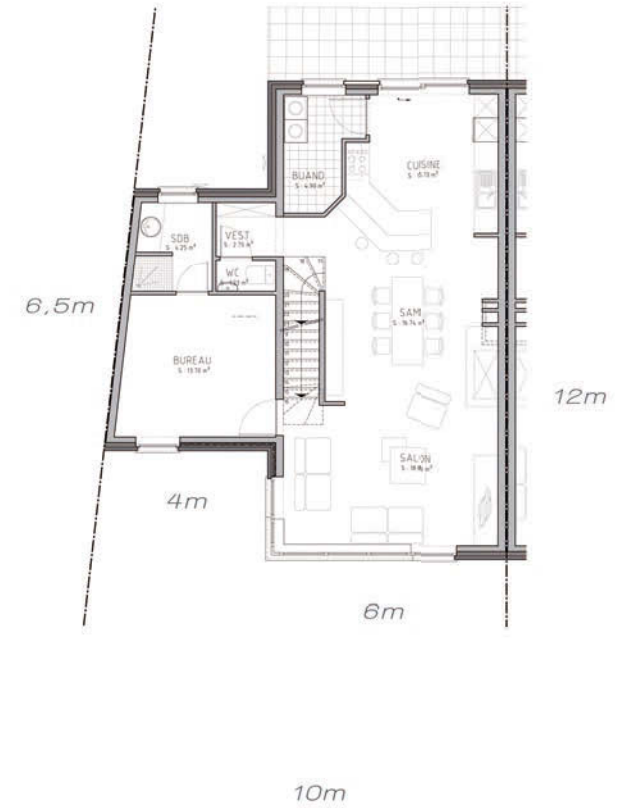
LOUNGE ELIT



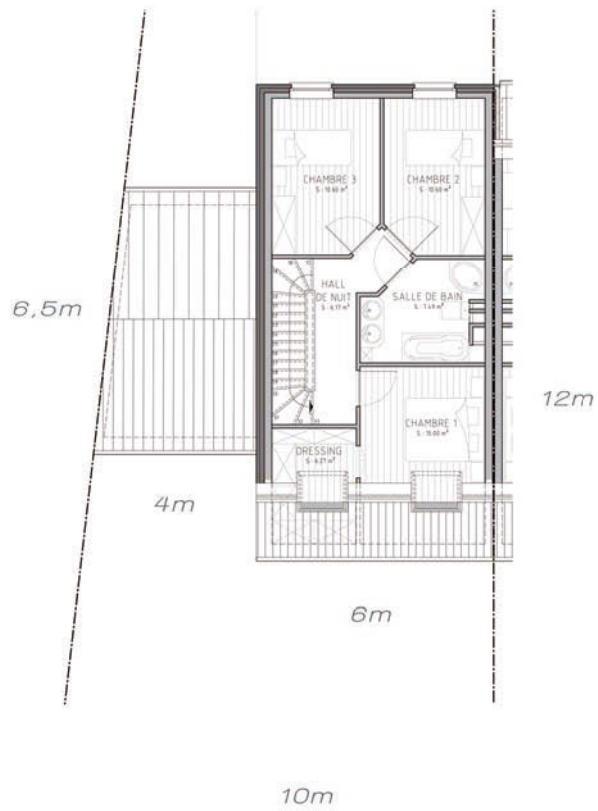
SITUATION



REZ-DE-CHAUSSEE



ETAGE



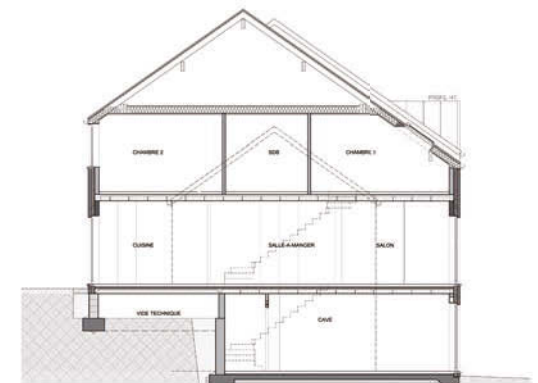
COMBLES



FACADE AVANT



FACADE ARRIERE

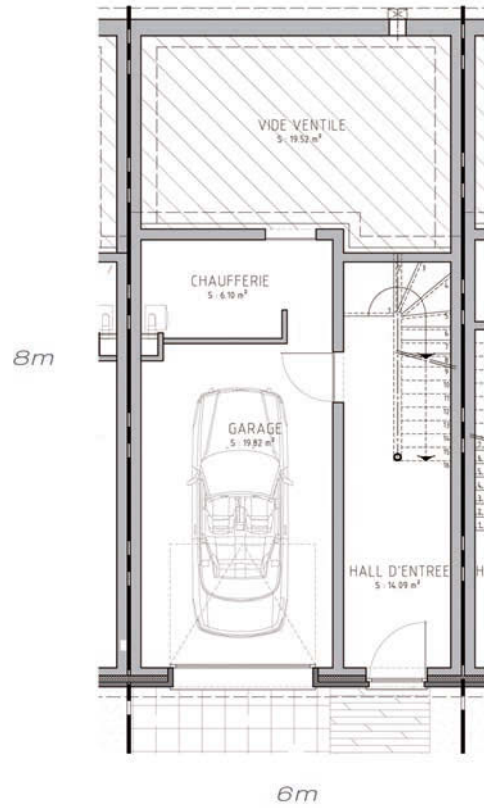


COUPE

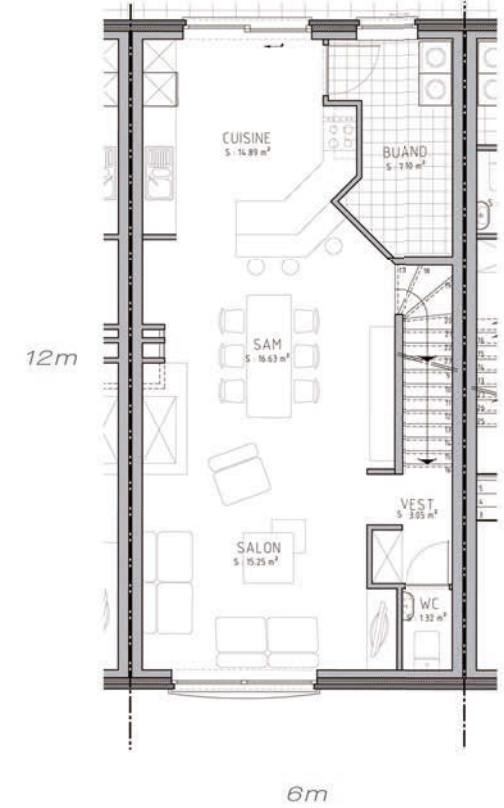
DOMUS



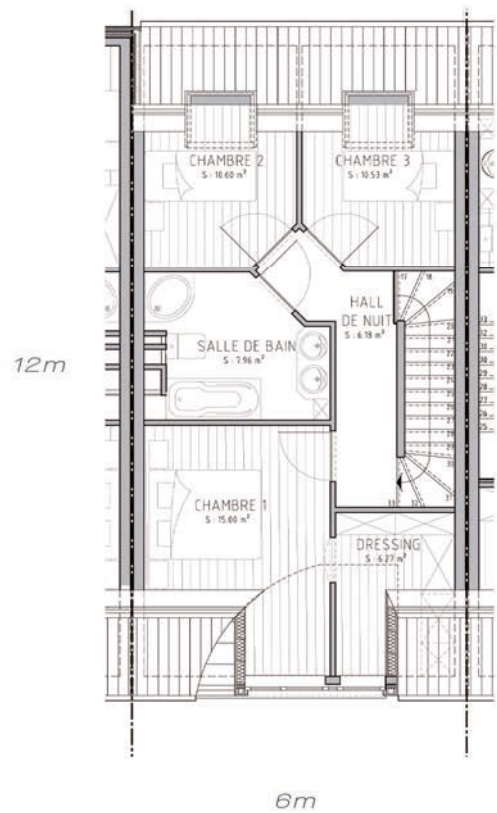
SITUATION



REZ-DE-CHAUSSEE



ETAGE



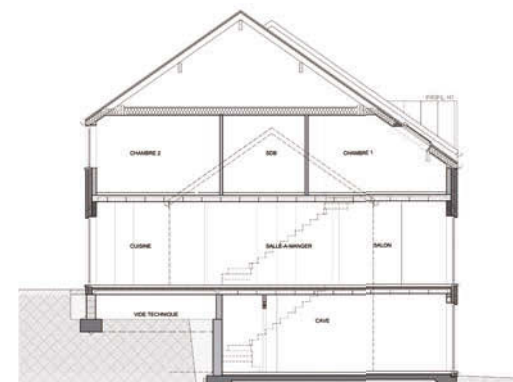
COMBLES



FACADE AVANT



FACADE ARRIERE



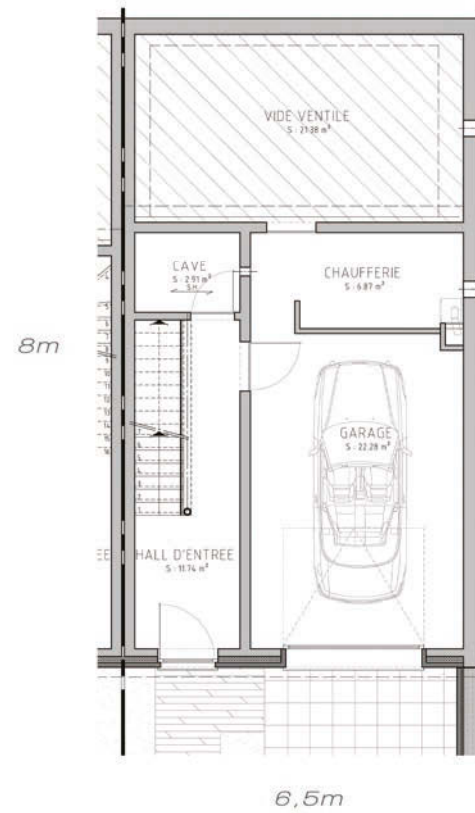
COUPE



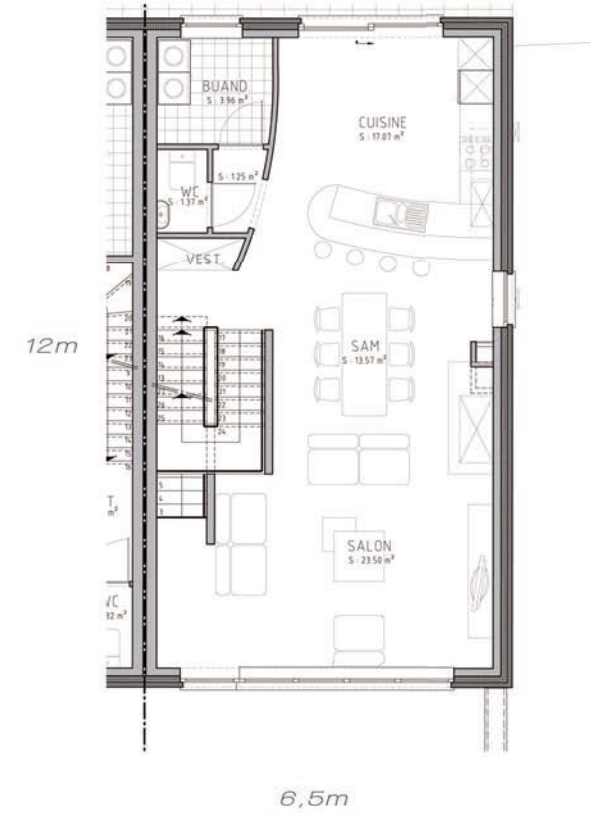
INGENTI



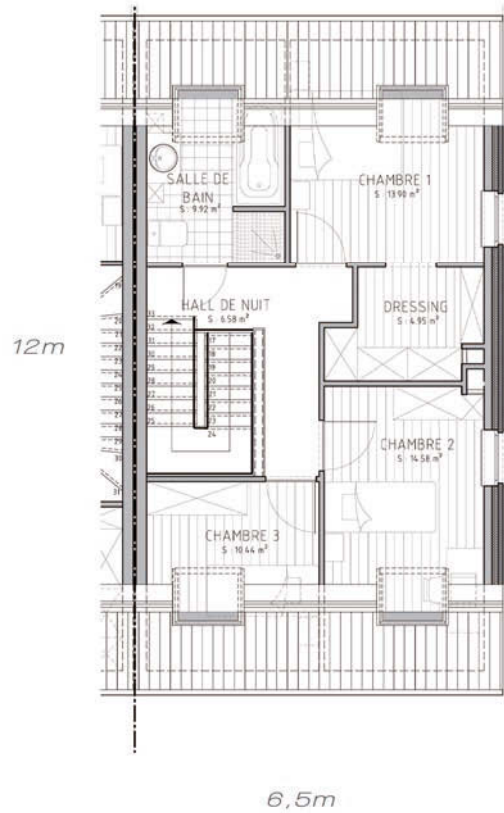
SITUATION



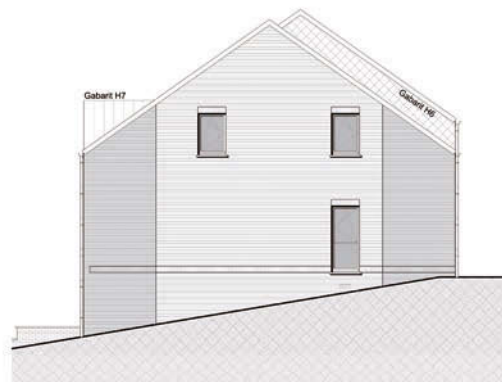
REZ-DE-CHAUSSEE



ETAGE



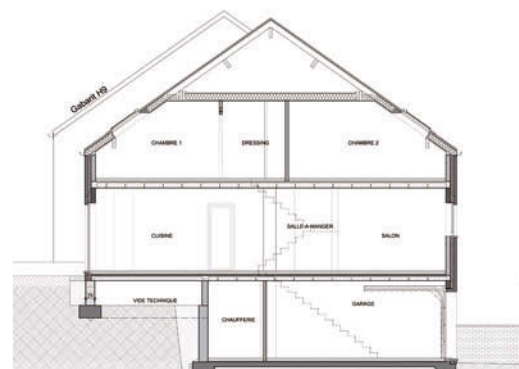
COMBLES



FACADE LATÉRALE DROITE



FACADE AVANT



COUPE

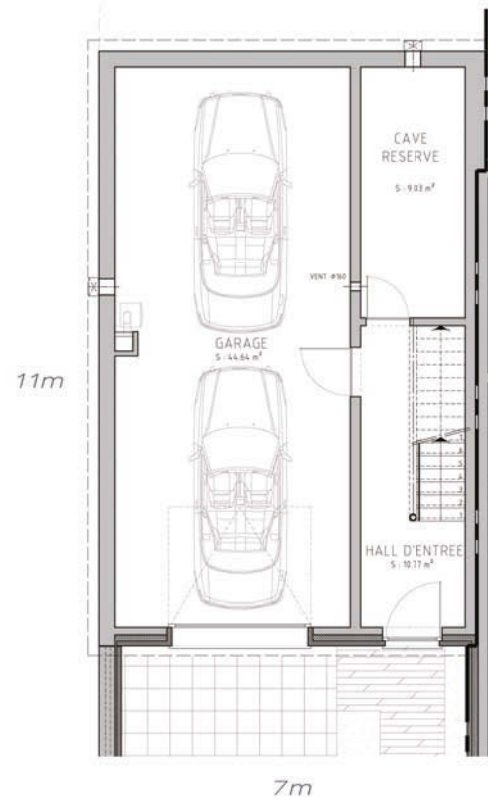


FACADE ARRIÈRE

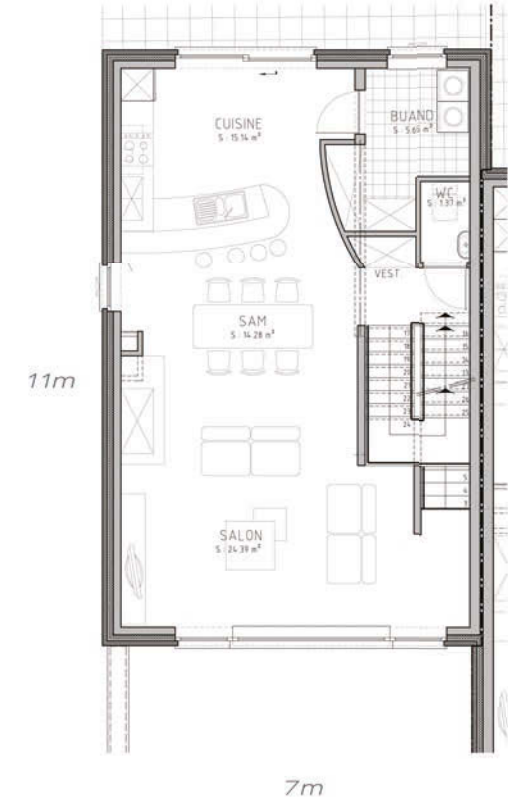
ELIT



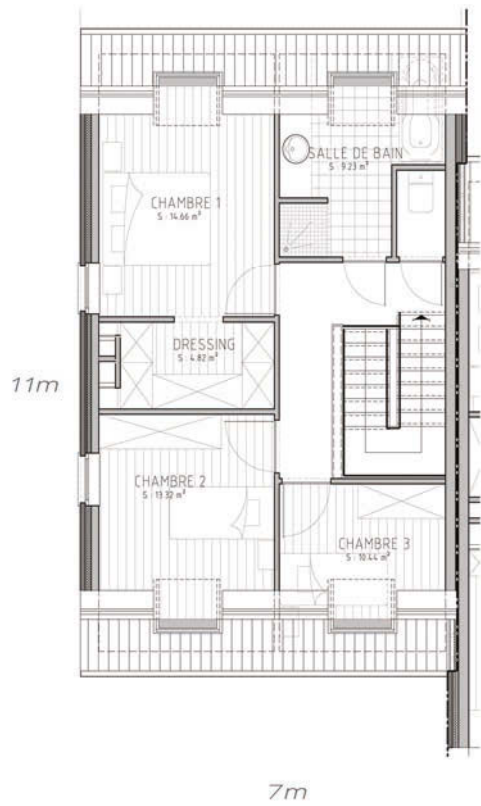
SITUATION



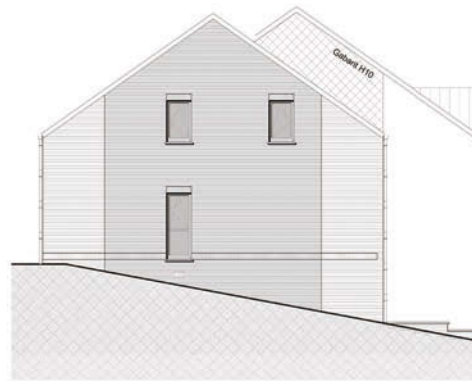
REZ-DE-CHAUSSEE



ETAGE



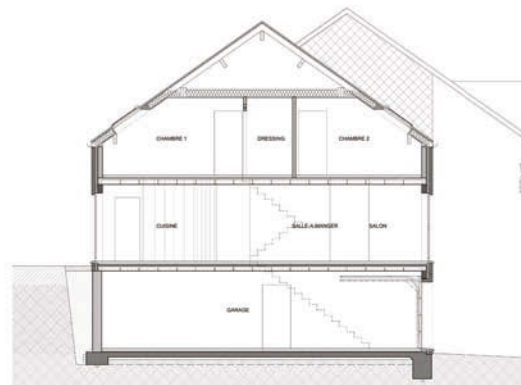
COMBLES



FACADE LATÉRALE GAUCHE



FACADE AVANT



COUPE

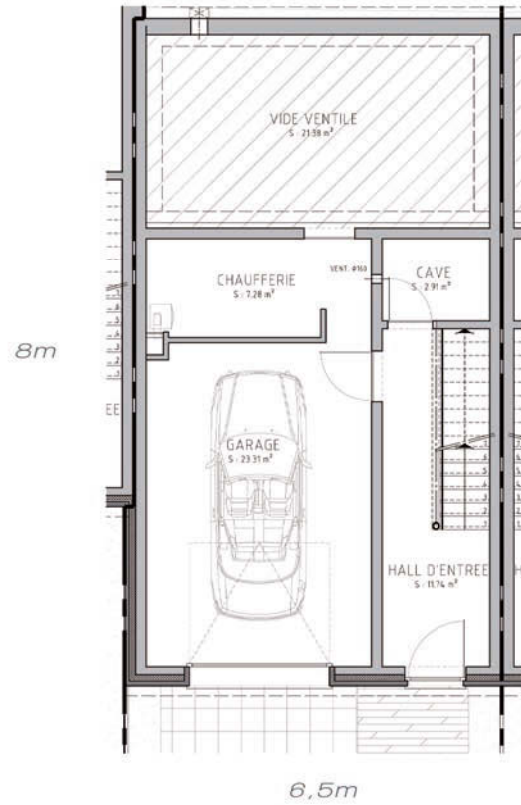


FACADE ARRIÈRE

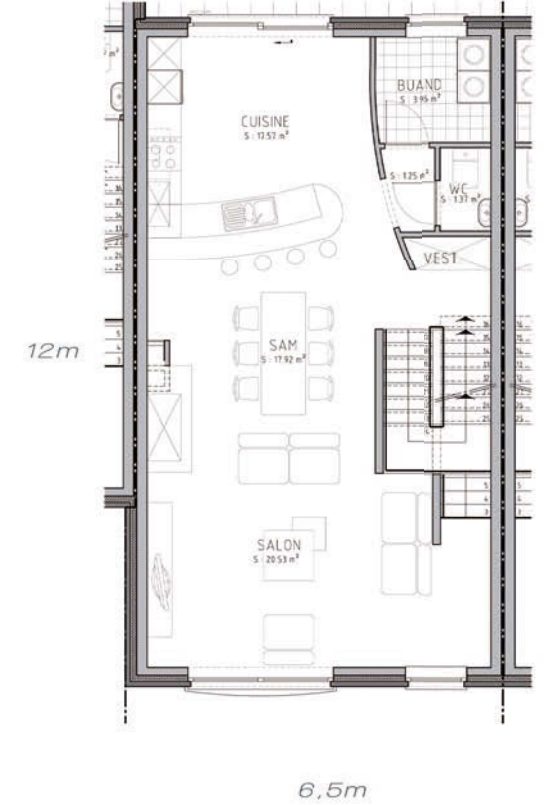
DOMUS



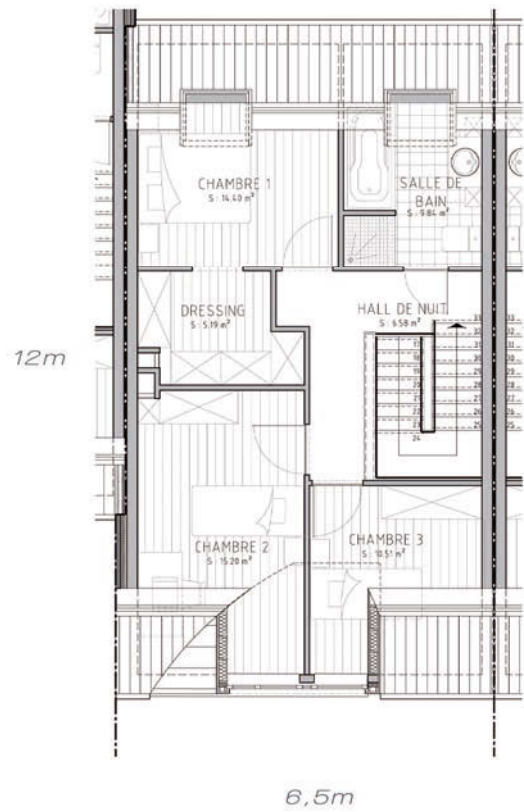
SITUATION



REZ-DE-CHAUSSEE



ETAGE



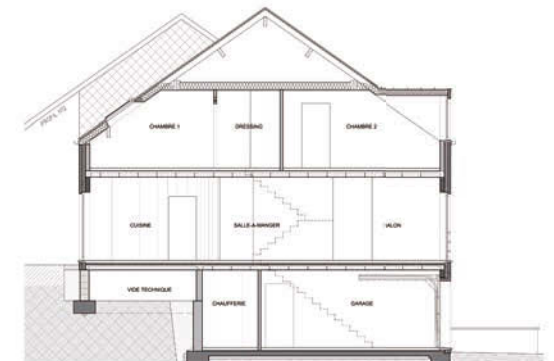
COMBLES



FACADE AVANT



FACADE ARRIERE

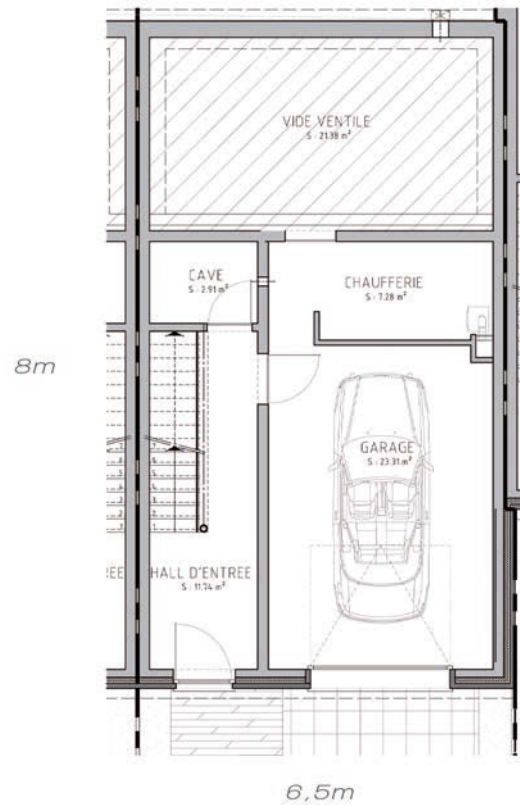


COUPE

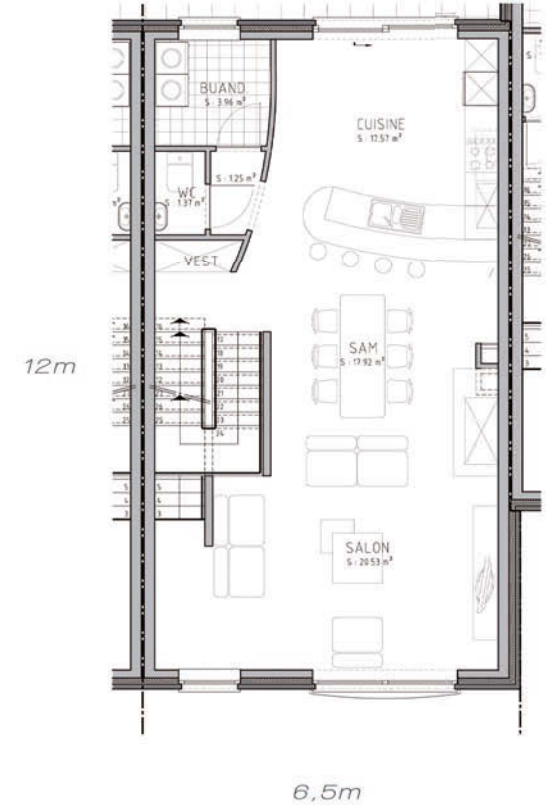
DOMUS



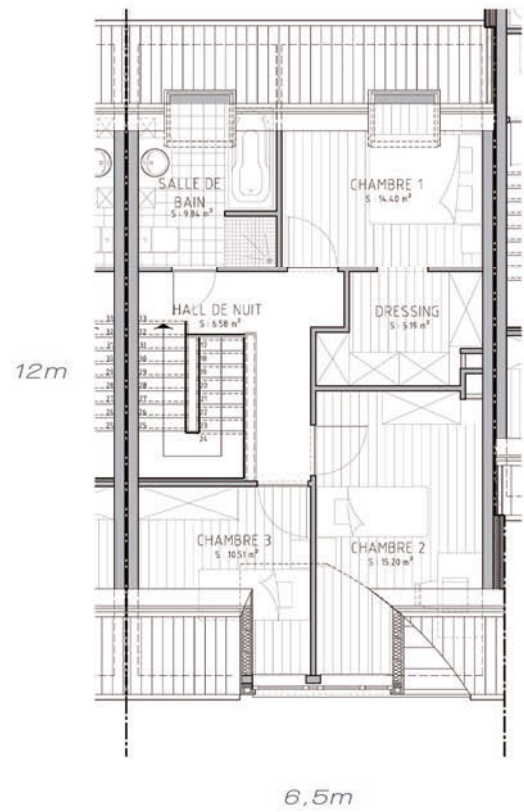
SITUATION



REZ-DE-CHAUSSEE



ETAGE



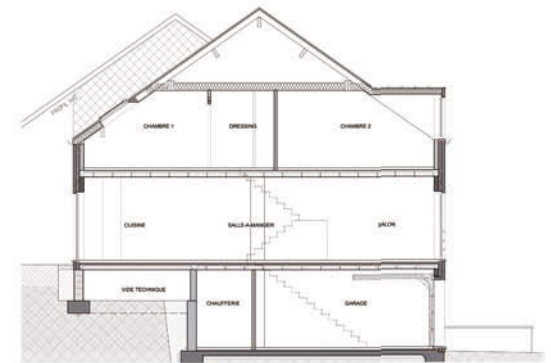
COMBLES



FACADE AVANT



FACADE ARRIERE



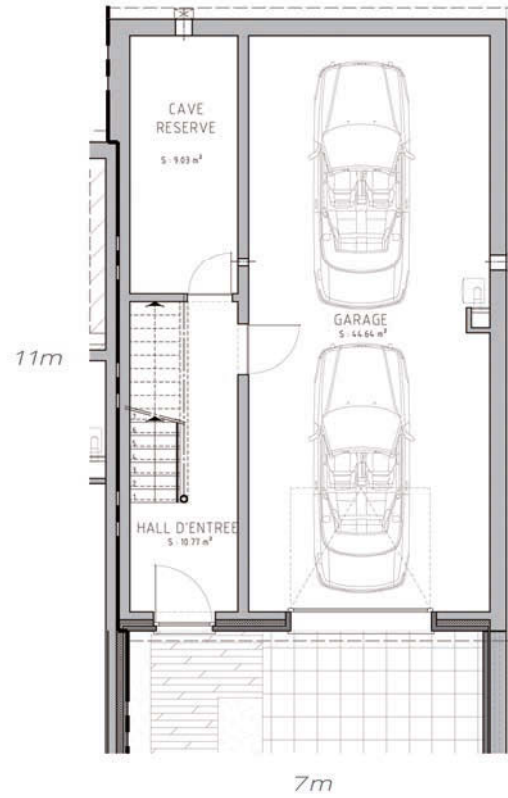
COUPE



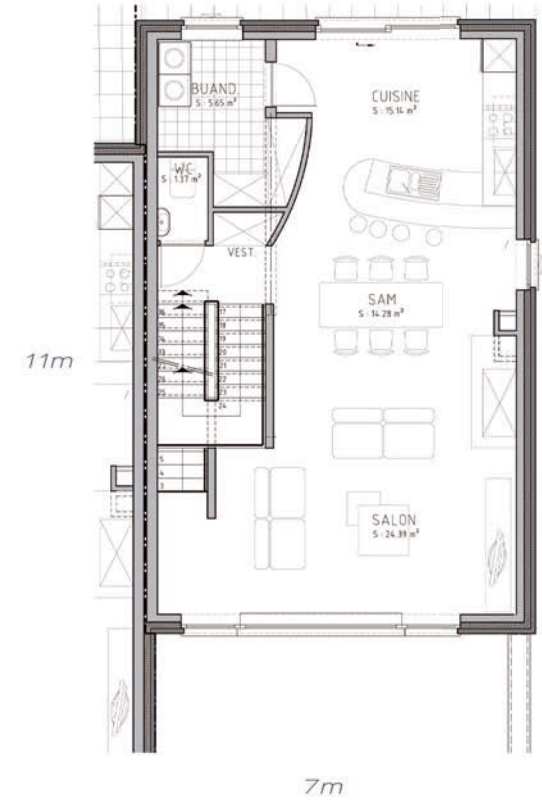
ELIT



SITUATION



REZ-DE-CHAUSSEE

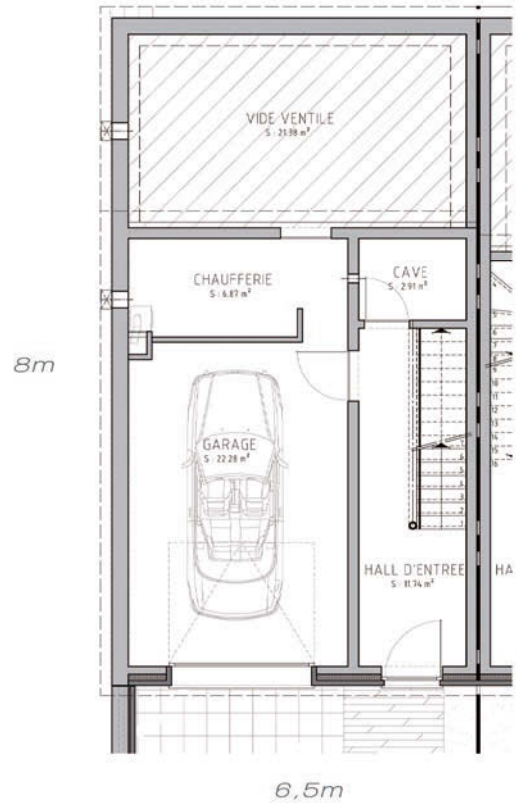


ETAGE

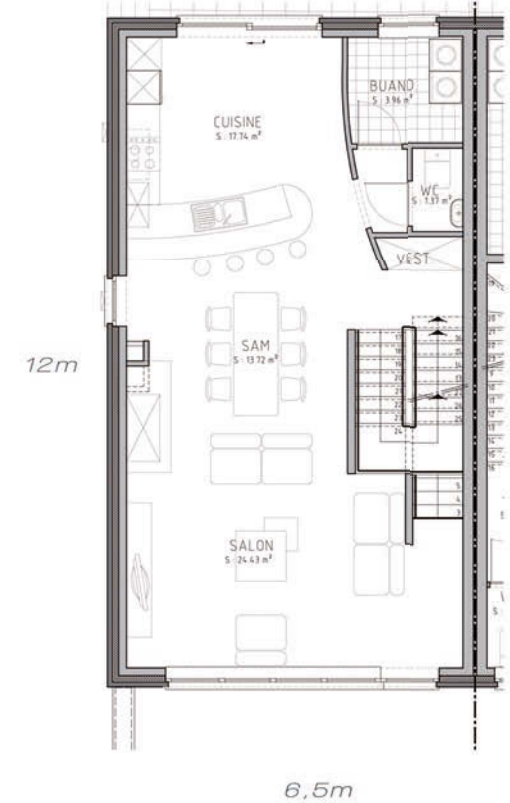
INGENTI



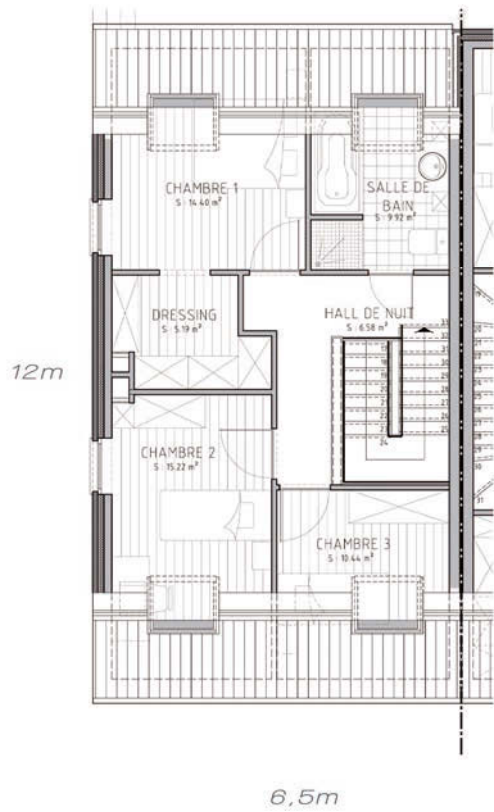
SITUATION



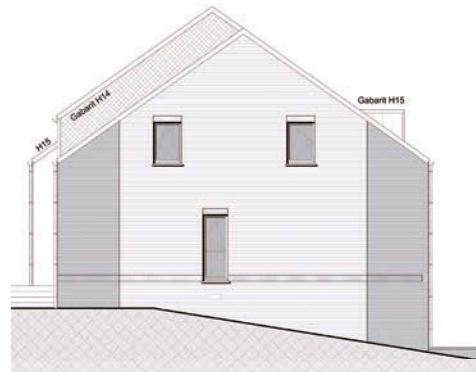
REZ-DE-CHAUSSEE



ETAGE



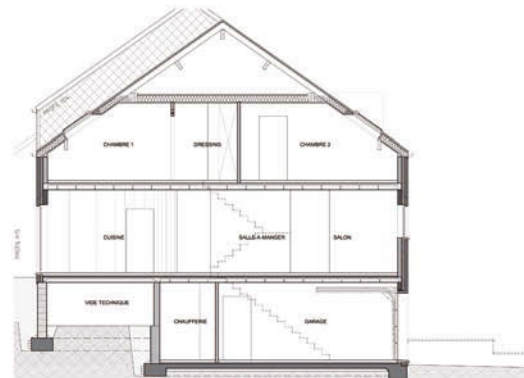
COMBLES



FACADE LATÉRALE GAUCHE



FACADE AVANT



COUPE

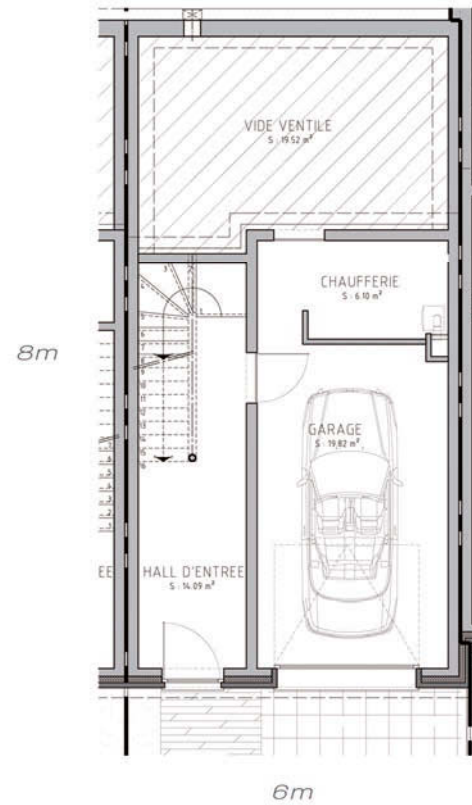


FACADE ARRIÈRE

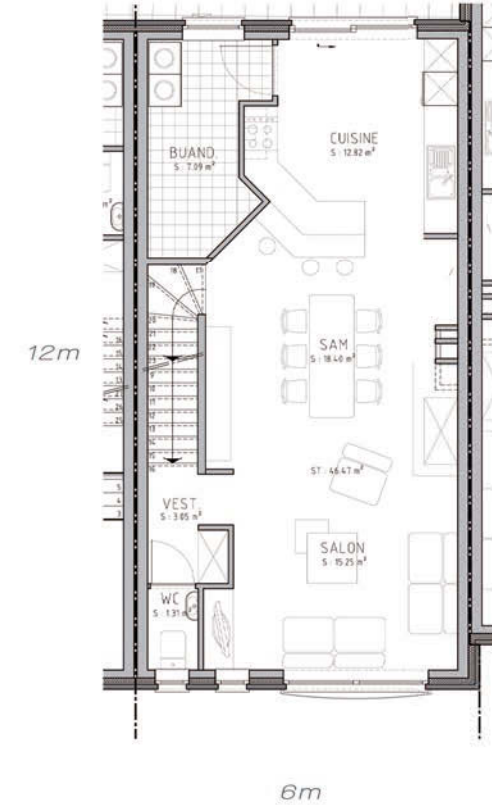
URBANA



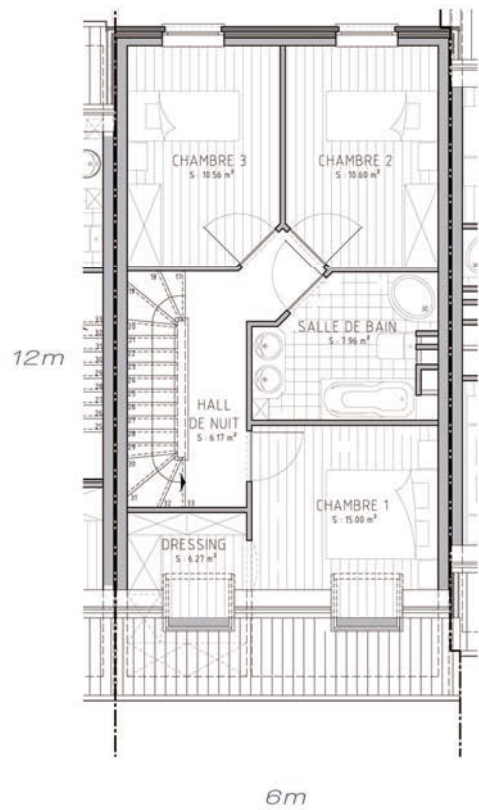
SITUATION



REZ-DE-CHAUSSEE



ETAGE



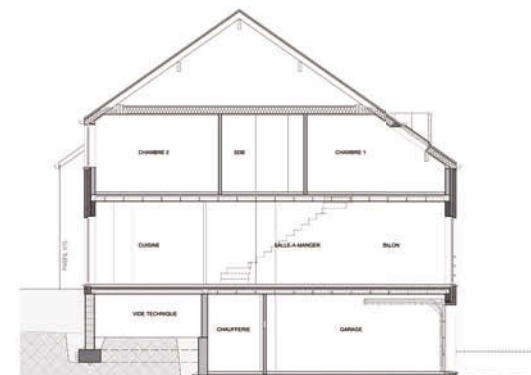
COMBLES



FACADE AVANT



FACADE ARRIERE

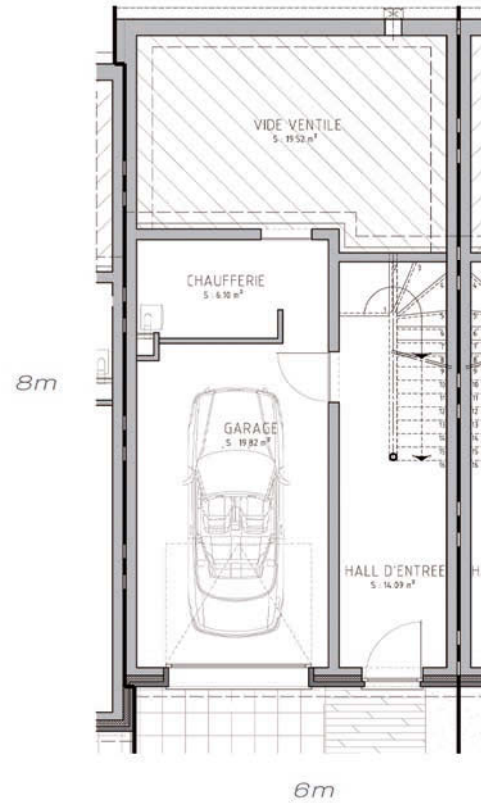


COUPE

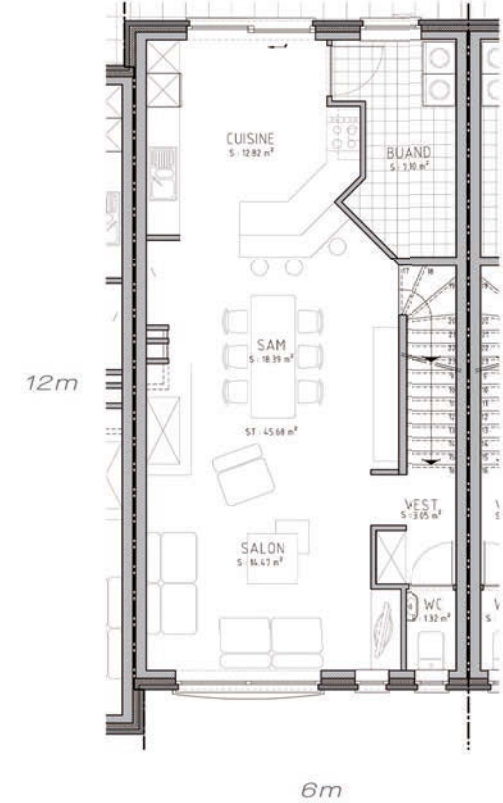
DOMUS



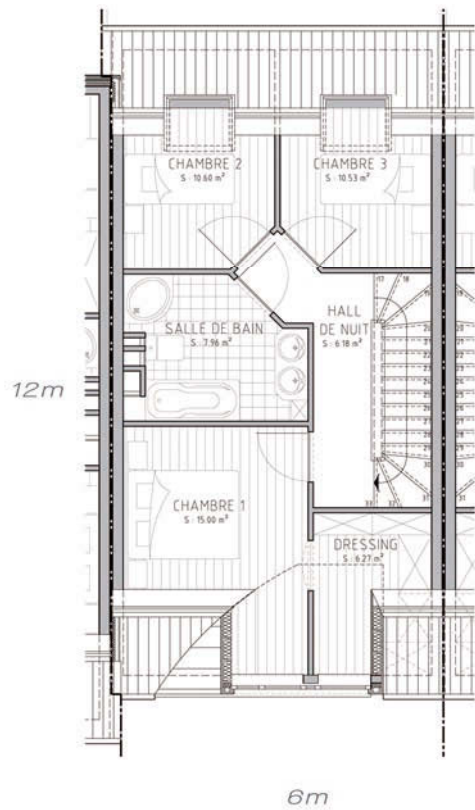
SITUATION



REZ-DE-CHAUSSEE



ETAGE



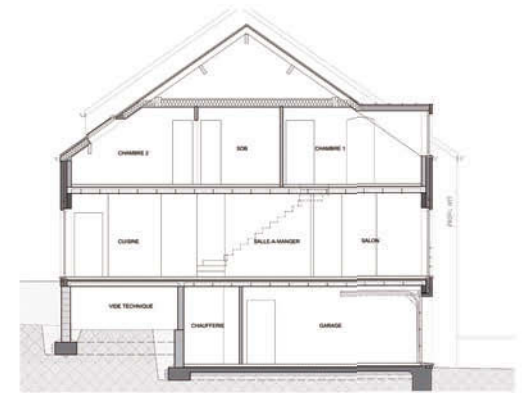
COMBLES



FACADE AVANT



FACADE ARRIERE



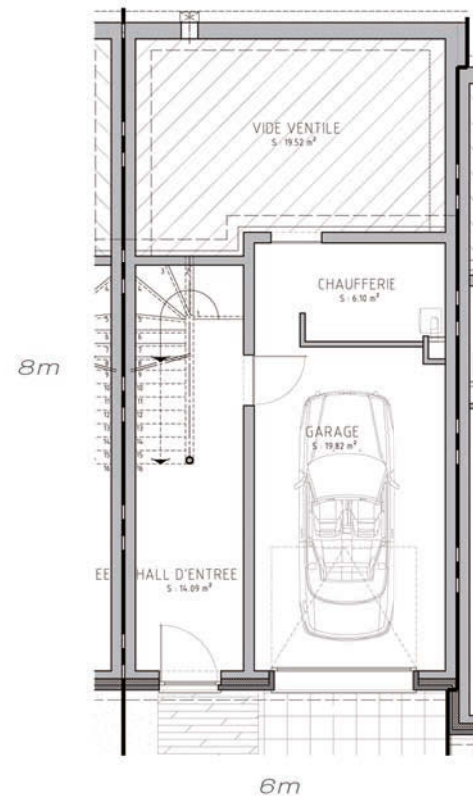
COUPE



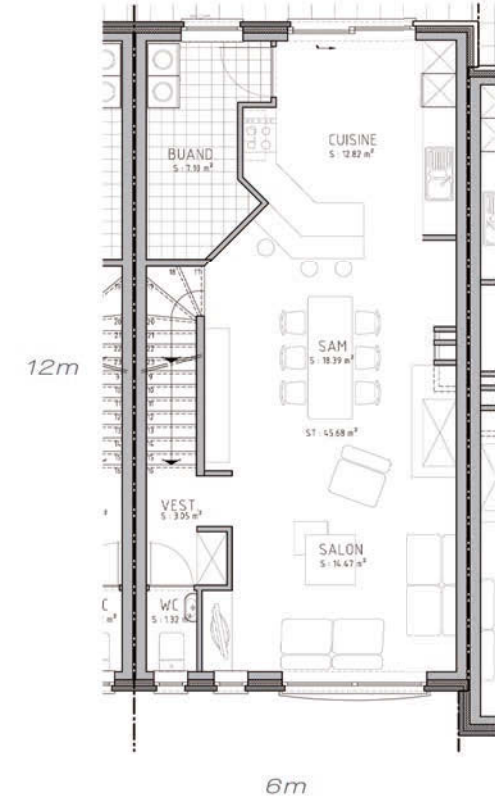
DOMUS



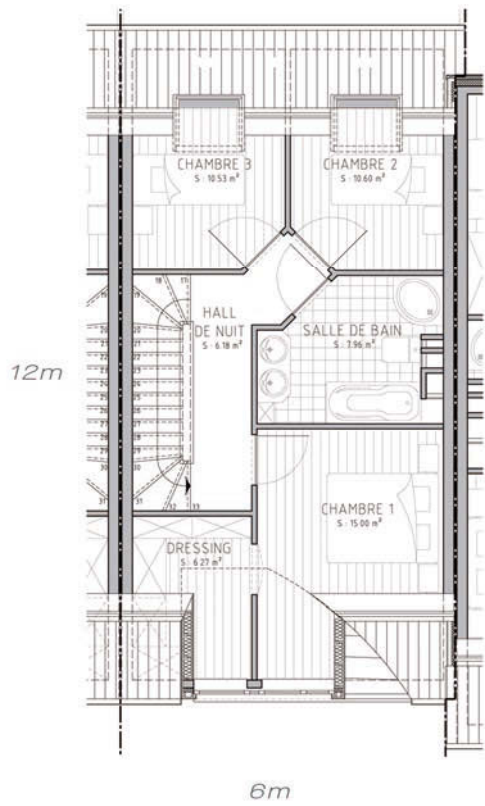
SITUATION



REZ-DE-CHAUSSEE



ETAGE



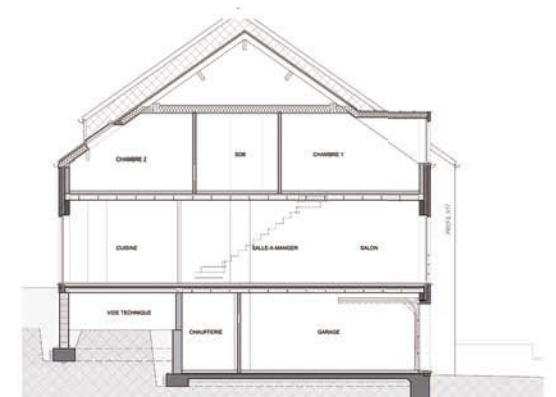
COMBLES



FACADE AVANT



FACADE ARRIERE

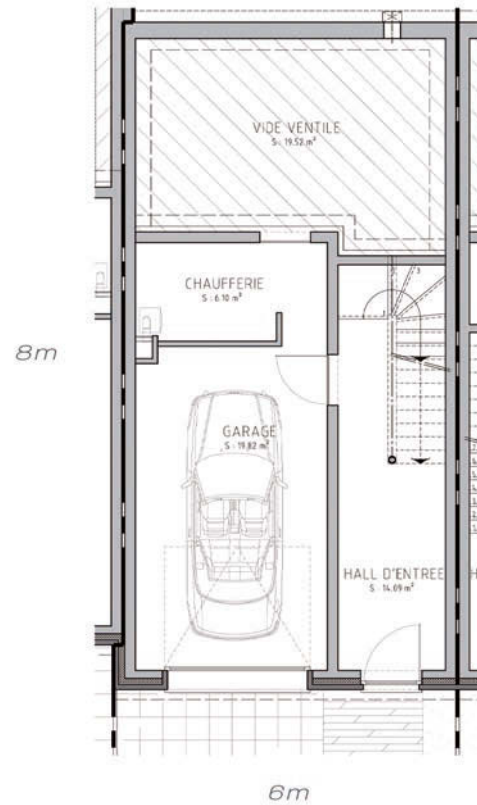


COUPE

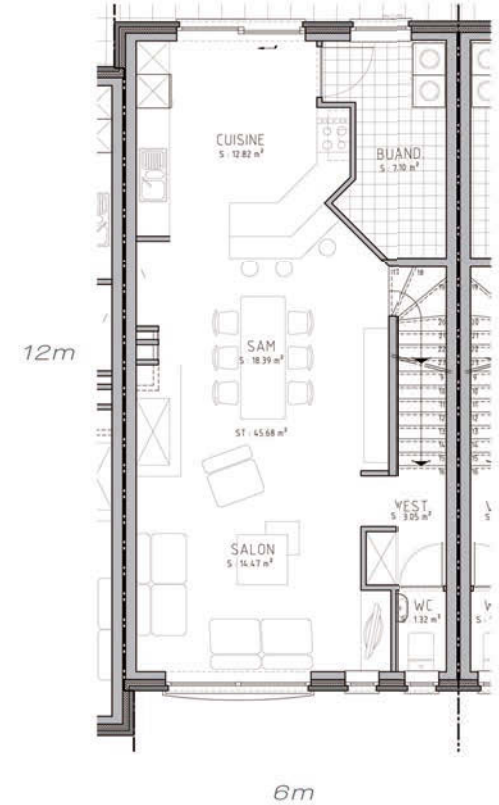
URBANA



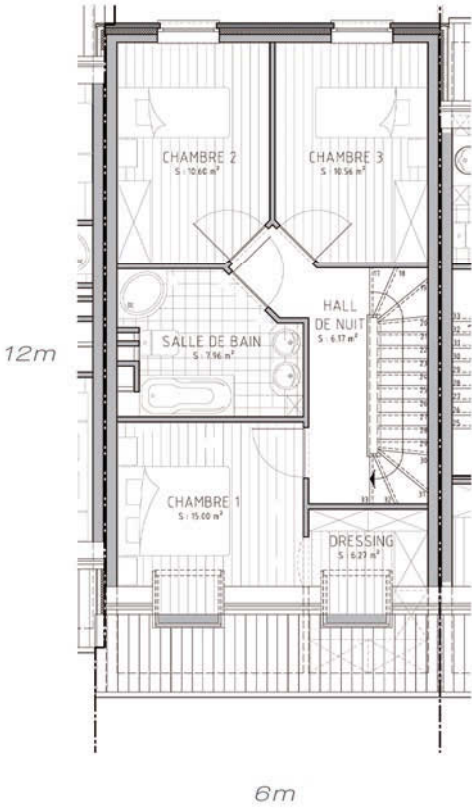
SITUATION



REZ-DE-CHAUSSEE



ETAGE



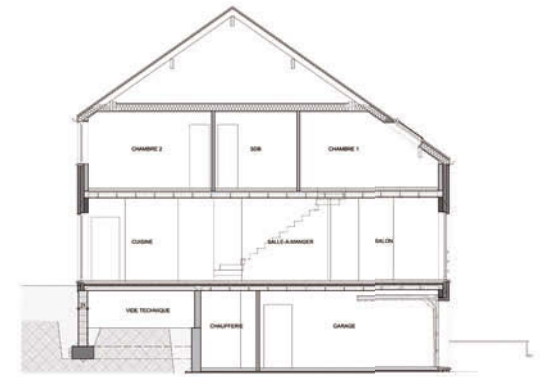
COMBLES



FACADE AVANT



FACADE ARRIERE



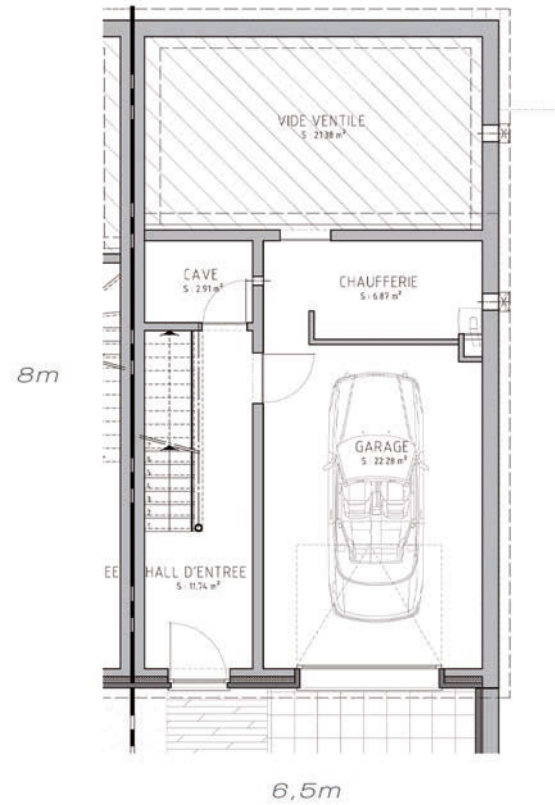
COUPE



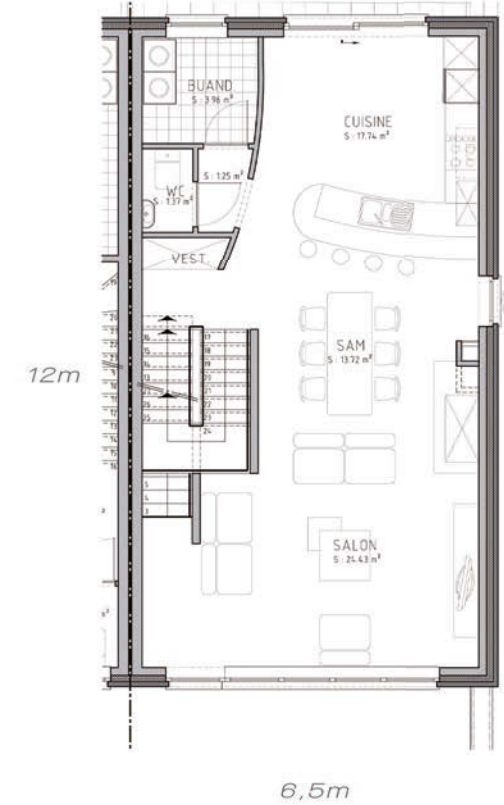
INGENTI



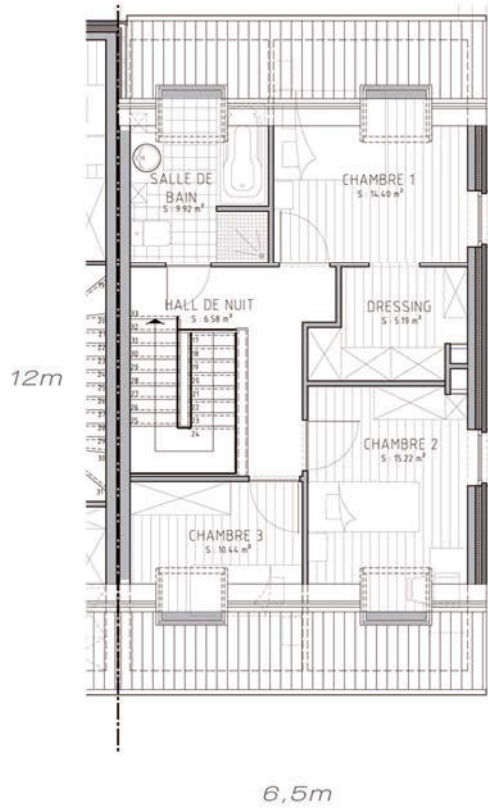
SITUATION



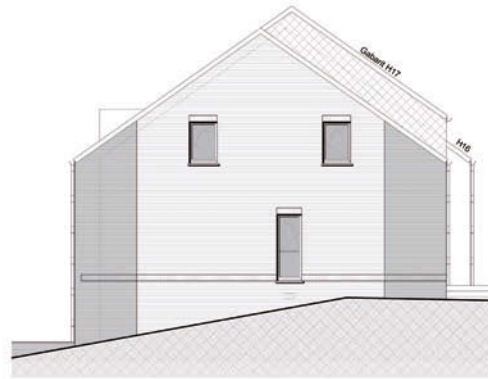
REZ-DE-CHAUSSEE



ETAGE



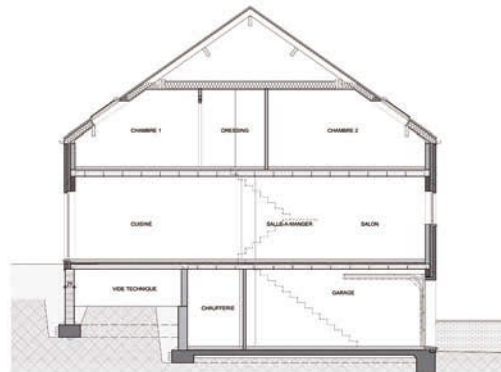
COMBLES



FACADE LATÉRALE DROITE



FACADE AVANT



COUPE

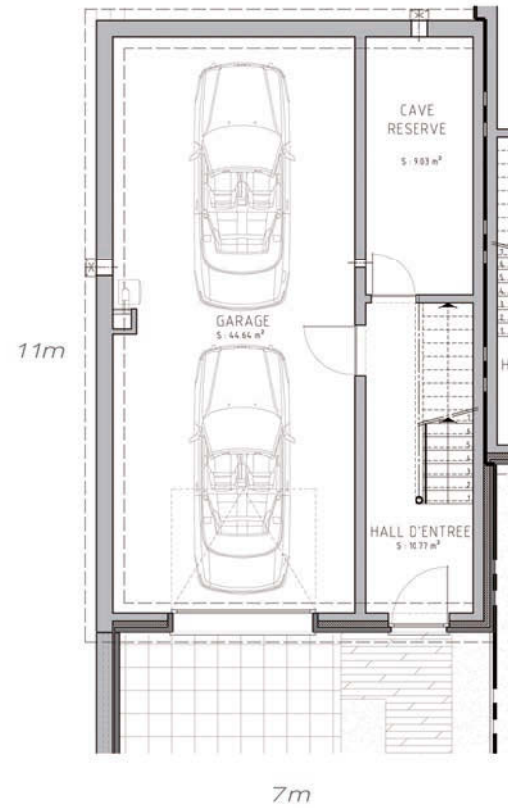


FACADE ARRIÈRE

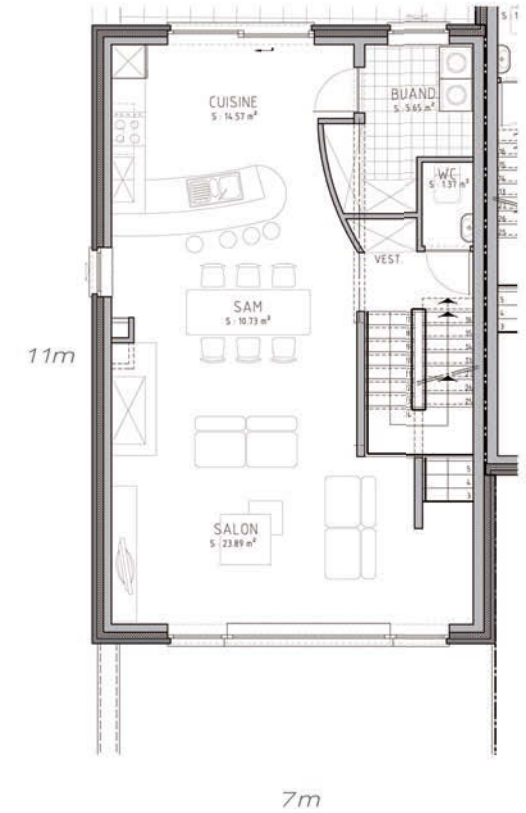
ELIT



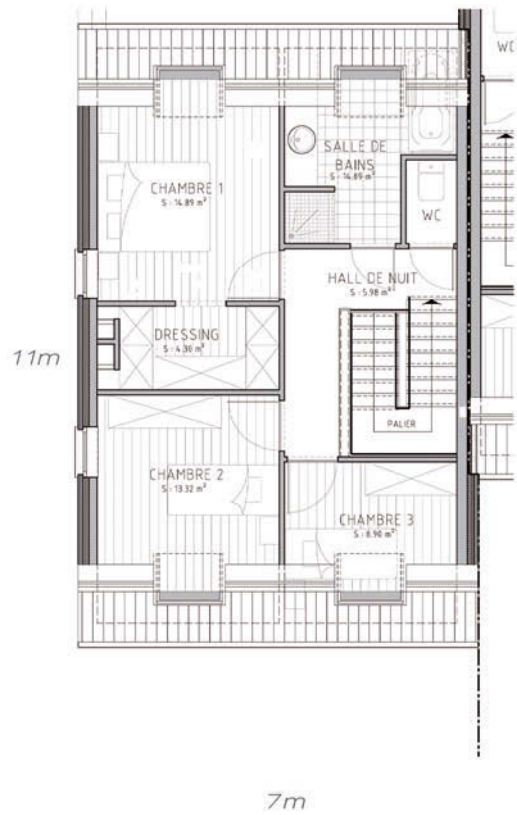
SITUATION



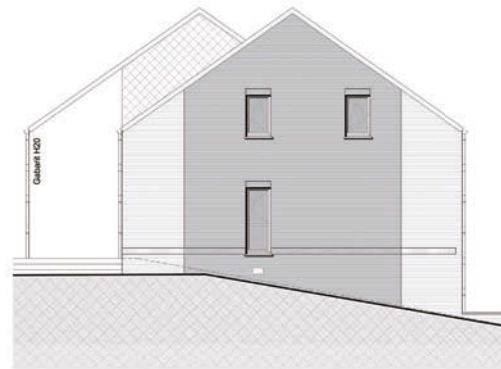
REZ-DE-CHAUSSEE



ETAGE



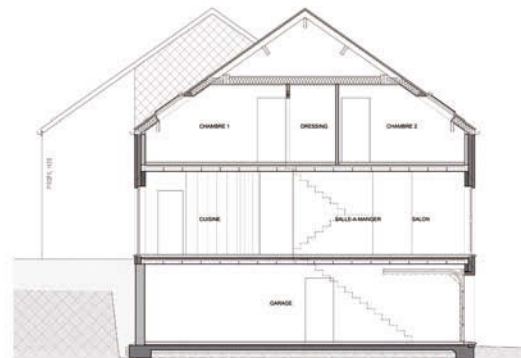
COMBLES



FACADE LATÉRALE GAUCHE



FACADE AVANT

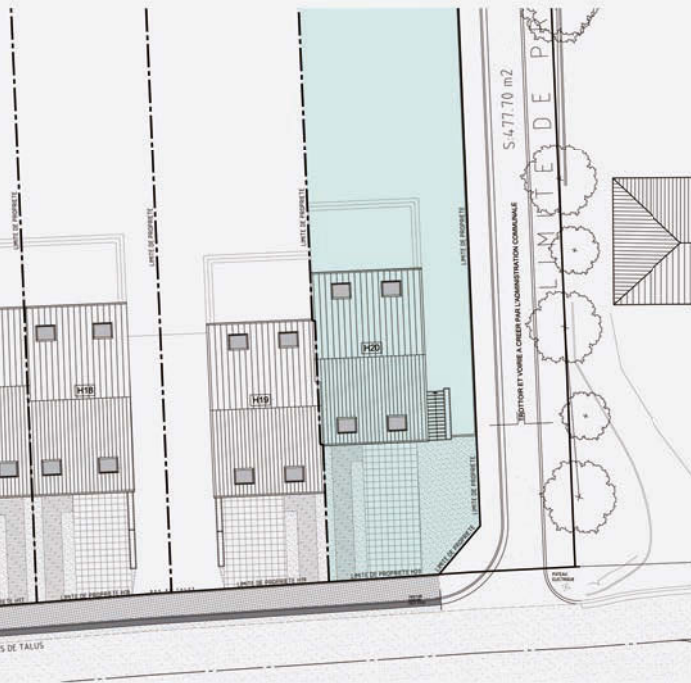


COUPE

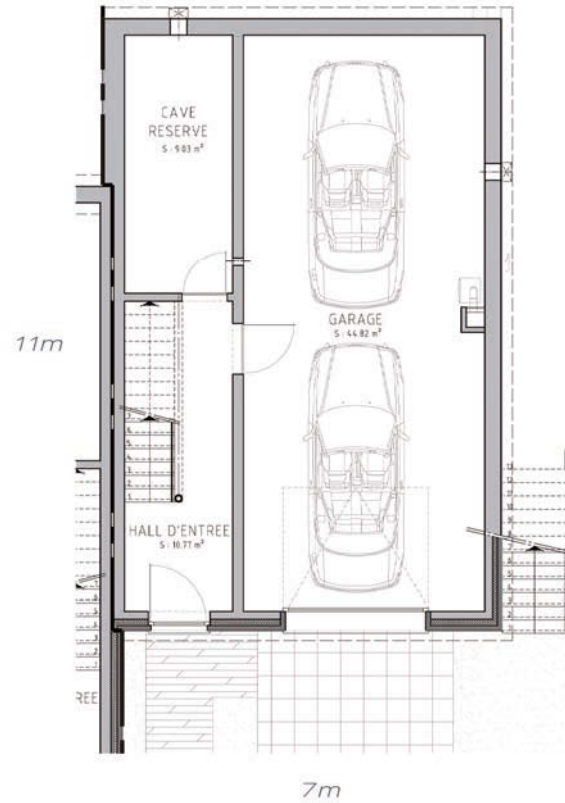


FACADE ARRIÈRE

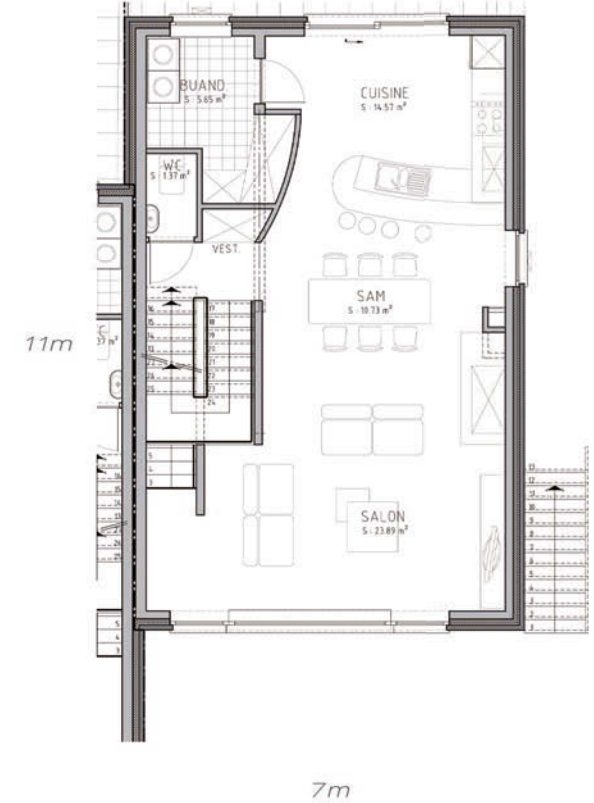
ELIT



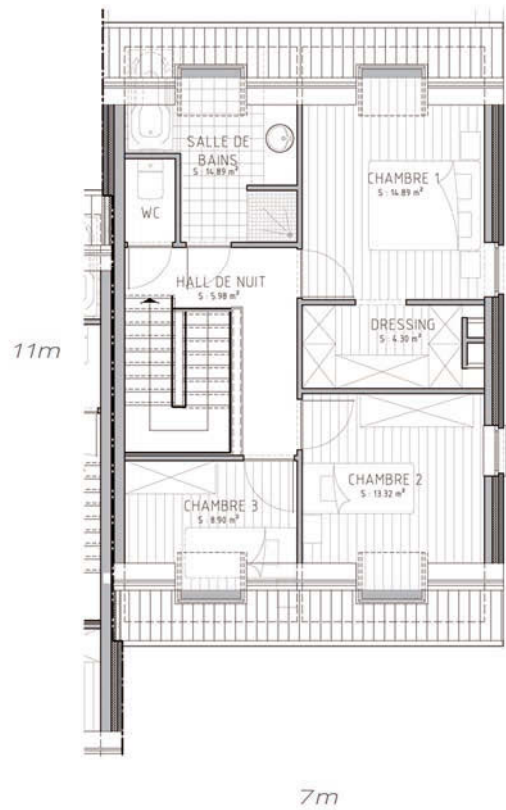
SITUATION



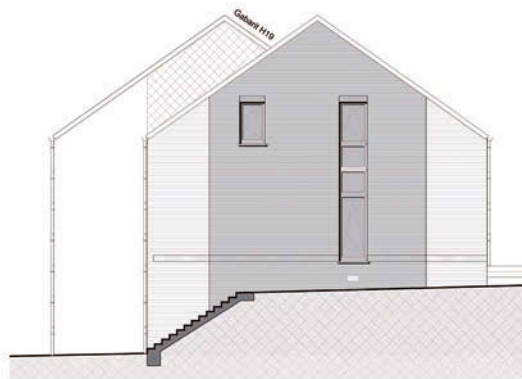
REZ-DE-CHAUSSEE



ETAGE



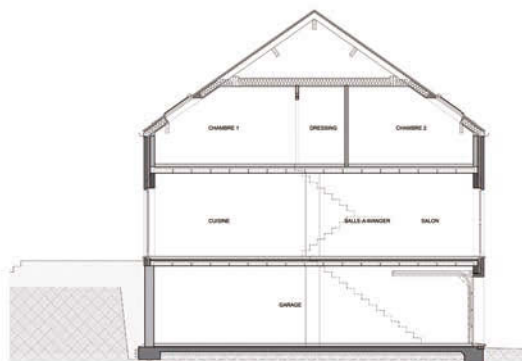
COMBLES



FACADE LATÉRALE DROITE



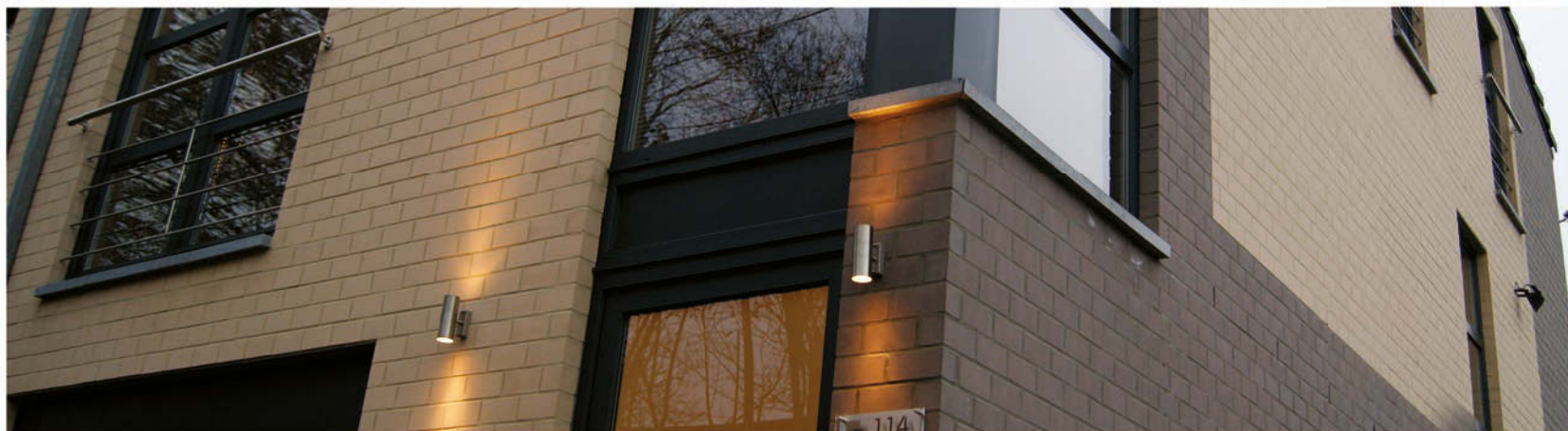
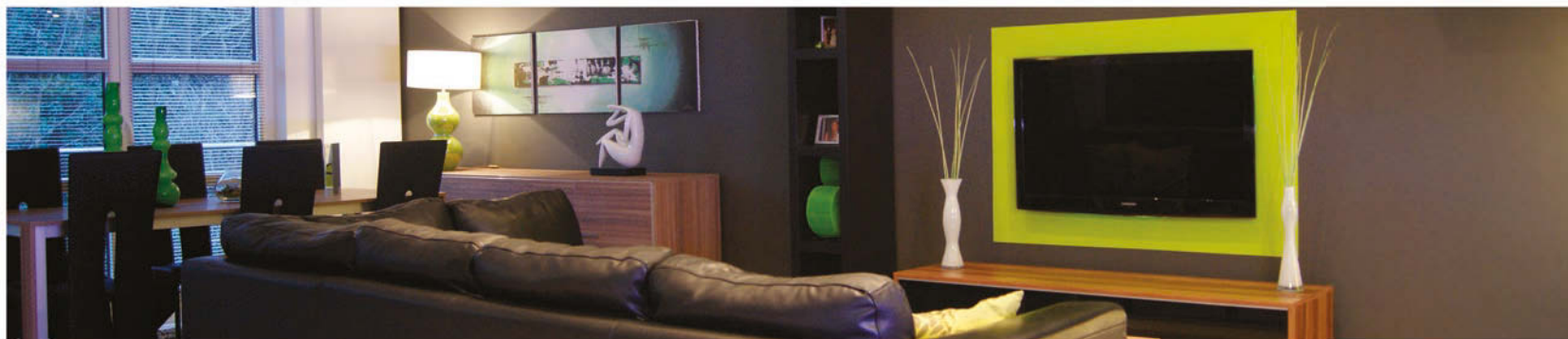
FACADE AVANT



COUPE



FACADE ARRIÈRE



MAISON TÉMOIN-ALLIANCE

VISITEZ NOTRE MAISON TEMOIN SUR RENDEZ-VOUS VIA LE 0496 763 041



VIOLA CONCEPT

Rue de l'Alliance 114
7100 La Louvière

info@violaconcept.com
www.violaconcept.com

TVA BE 0818 479 664
+32 (0)477 657 987

*info@
projetdenamur.be*